

Olaf's

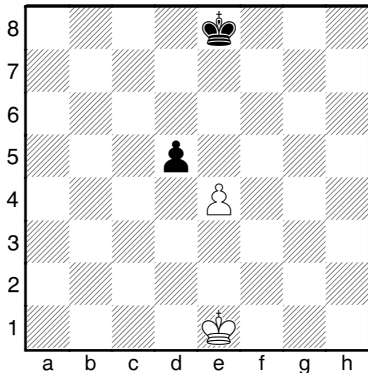


Chess Notes

Opening Strategies for Black

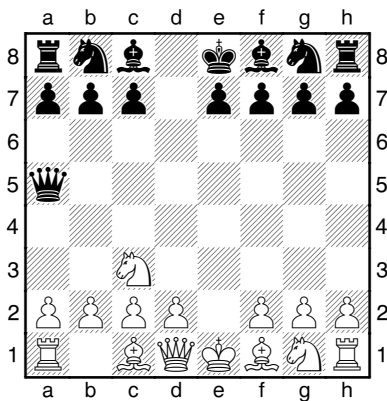
1.e4 d5

Scandinavian Defense (D)

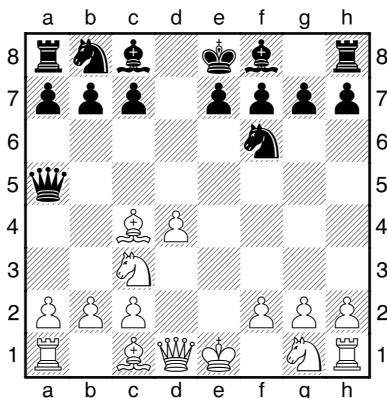


1.e4 d5 I) 2.exd5 ♖xd5

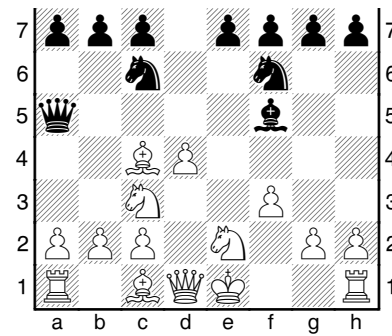
a) 3.d4 e5!? 4.♘f3 exd4 5.♙xd4 ♞f6. b) 3.♘f3 ♟g4 4.♟e2 ♞c6 5.d4 0-0-0. 3.♘c3 ♙a5 (D)



a) 4.♘f3 ♞f6 5.♟e2 Black must be careful 5. ...c6 looking for a later development of the ♟c8 6.0-0 ♟g4. b) 4.♟c4 it is important to prevent f5 ...♞f6 5.d3 threatening ♘g1-e2-g3 and ♟f2-f4-f5 pressure on the kingside ♞c6 6.♟d2 ♙f5. 4.d4 ♞f6 5.♟c4 (D)

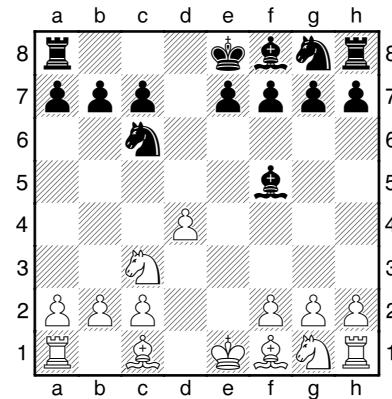


White looking for ♘g1-e2 and ♟f2-f4-f5. 5. ...♞c6 6.♘ge2 ♟g4 7.f3 ♟f5 (D)



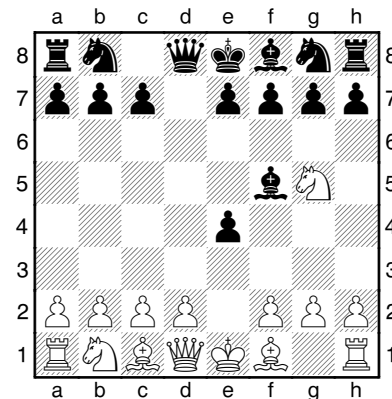
1.e4 d5 II) 2.♘c3 dxe4 3.♘xe4 ♙d5 4.♙f3

(4.♘c3 ♙a5 etc. leads to the mainline) 4. ...♞c6 5.♘c3 ♙e5+ 6.♙e3 ♟f5 7.♙xe5 ♞xe5 8.d4 ♘c6 (D)



1.e4 d5 III) 2.♘f3 dxe4 3.♘g5 ♟f5

King's Indian Attack (D)



1.e4 d5 IV) 2.e5 c5

3.f4 ♞c6 4.♘f3 ♟g4 5.h3 ♟xf3 6.♙xf3 e6 7.d3 h5! 8.g3 ♘ge7 9.♟g2 ♞f5 10.c3 ♟e7 Black with good chances looking for ♙d8-c7, 0-0-0.

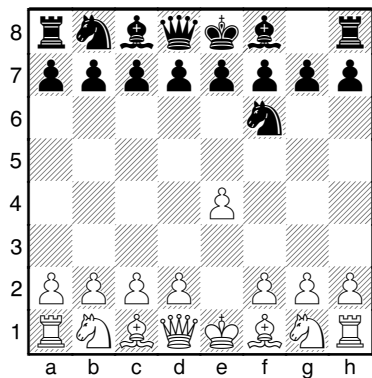
1.e4 d5 V) 2.d4

Blackmar-Diemer Gambit (BDG) usually arising from 1.d4 d5 2.e4 See below.

VI) 2.d3 dxe4 3.dxe4 ♙xd1+ 4.♙xd1 e5 5.♟e3 ♞f6 6.f3 ♞bd7 7.♘d2 ♟c5 8.♘c4 ♟xe3 9.♘xe3 ♙e7 10.c3 ♞c5 =

1.e4 ♘f6

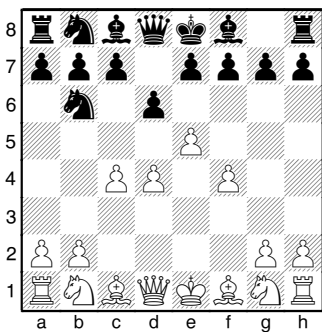
Alekhine Defense (D)



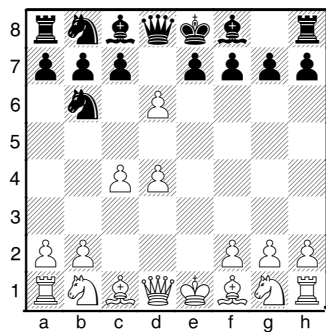
Challenging for Black. Note the many movements of the black bishop.

1.e4 ♘f6 I) 2.e5 ♗d5
3.d4 d6 4.c4 ♘b6 5.f4 (D)

1.e4 ♘f6 II) 2.e5 ♗d5
3.d4 d6 4.c4 ♘b6 5.exd6 (D)



Four Pawns Attack

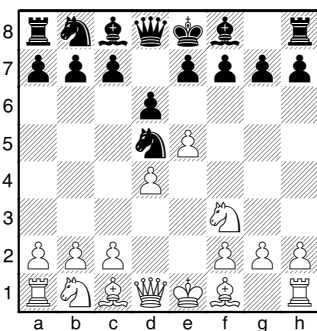


Exchange Variation

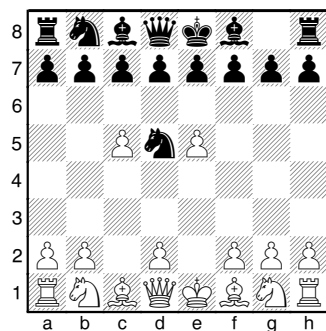
2. ...d5 3.e5 ♗e4 (Burgess)

1.e4 ♘f6 III) 2.e5 ♗d5
3.d4 d6 4.♘f3 (D)

1.e4 ♘f6 IV) 2.e5 ♗d5
3.c4 ♘b6 4.c5 ♗d5 (D)



Modern

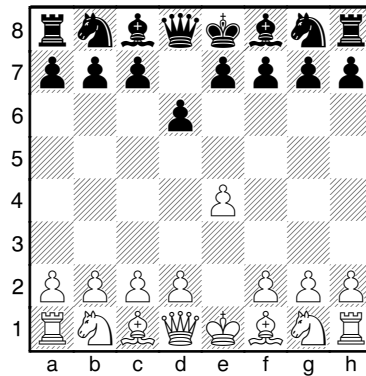


Chase Variation

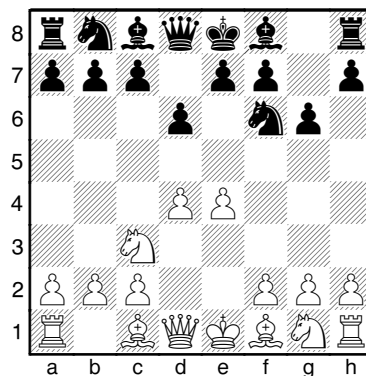
See Burgess TMBPC p.150 and Silman TCBOCS p.9

1.e4 d6

Pirc Defense (D)



1.e4 d6 2.d4 ♘f6 I) 3.♘c3 g6 (D)



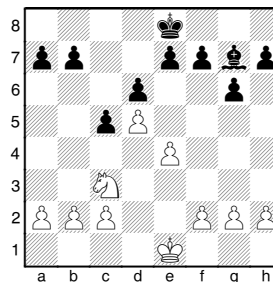
Classical Pirc position.

Themes:

- Black aims for g6, ♗g7, 0-0.
- White's e4-e5 is an important threat for Black.
- With the fourth move White is choosing a plan.
- Black's aim is not to destroy White's pawn center but to change it in his own favor.
- Black should not provoke e4-e5 by ...d6-d5. but play ...c7-c5 or e7-e5 (leading to Black-friendly position in the King's Indian).

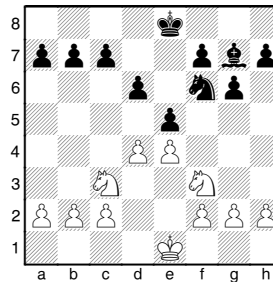
Black plays ...c7-c5 (developing the queen on a5)

- ...and White d4xc5. Black's ...d6xc5 usually unsatisfactory for Black if White can play e4-d5 and then further strengthen the key e5-pawn.
- ...and White d4-d5:



For Black ...b7-b5 is desirable (but difficult to achieve), strengthening his influence on the queenside, to weaken White's knight on c3 by threatening ...b5-b4. Also ...e7-e6, exploiting the relative vulnerable d5-square, is another thematic continuation.

- Black should consider exchanging for a pawn if White occupies d6 with a knight.
- If White counters c7-c5, Black may consider change into a favorable version of the Sicilian Dragon.
- The motif of d4xc5, ... ♖d8-a5! is most significant for Black.
- ...and White keeping his pawn on d4: Is answered by ...c5xd4, achieving a favorable Dragon formation.
- ...and White trying an immediate e4-e5:

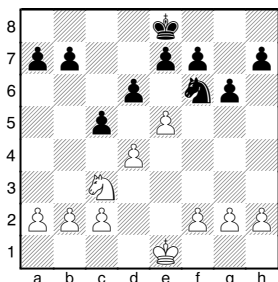


Continuations:

Pirc D. 1.e4 d6 2.d4 ♞f6 3.♞c3 g6

Summary of White's 3.♞c3 g6

- **4.f4** intending e4-d5. Avoids trading queens after ...dxe5 by capturing on e5 with the f4-pawn.
- **4.♙g5** putting pressure on the h4-d8 diagonal.
- **4.♙c4** often followed by ♖e2, supporting e4-e5.
- **4.f3** often combined with ♙e3, ♖d2 and ♙e3-h6 to trade off Black's g7-bishop. Also, after f2-f3 the g2-g3 advance can lead to a h2-h4-h5 attack. White focussing on the kingside.
- **4.♙e3** often followed by ♖d2. White focussing on the kingside. 4. ... ♞g4 5.♙g5 h6 6.♙h4 g5 7.♙g3 weakens Black's position.
- **4.♙e2** White focussing on the kingside, supporting the advance h2-h4-h5.
- **4.♞f3** White focussing on the center, usually followed ♙e2 and 0-0.
- **4.g3** White focussing on the center, planning to fianchetto his king's bishop and place the king's knight on e2.

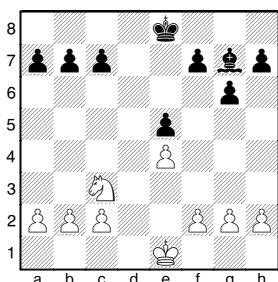


White's pawn center can dissolve quickly with ...c5xd4 and ...d6xe5. Black should not trade pawns on e5 immediately. Black's knight to retreat to d7.

- A worry for Black is the h2-h4-h5 attack, often accompanied by ♙h6.

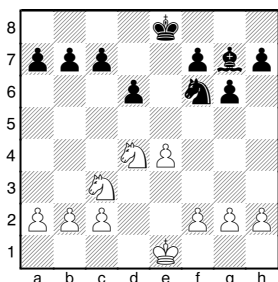
Black plays ...e7-e5 (less ambitious than c7-c5)

- ...and White dxe5:



Similar to King's Indian Defense, even though there White's pawn has advanced to c4.

- ... and White d4-d5. Again similar to variations of KID but less favorable for White since White's standard plan of advancing his c-pawn to weaken Black's queenside is unavailable.
- ...and White leaves his pawn on d4. Black should play the "Ruy Lopez" Pirc:

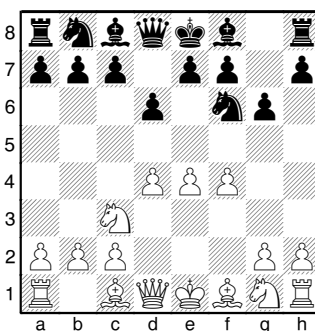


...and look for a favorable transposition to the "Philidor" Pirc:

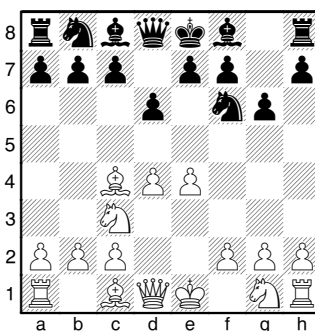
Other 4th moves can transpose in the main lines. Details of main lines after 1.e4 d6 2.d4 ♞f6 3.♞c3 g6:

4.f4 (Austrian Attack) (D)

4.♙c4 (D)



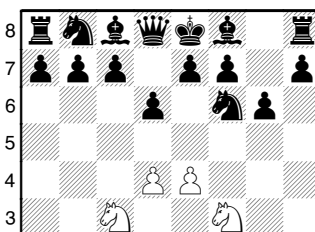
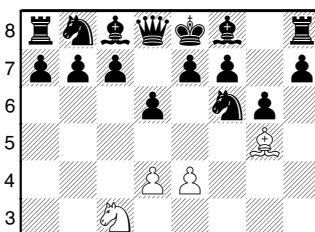
4. ... ♙g7 5.♞f3 c5

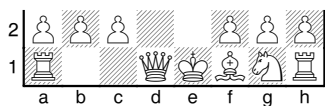


4. ... ♙g7

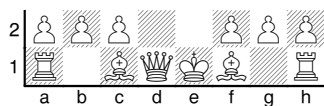
4.♙g5 (D)

4.♞f3 (D)





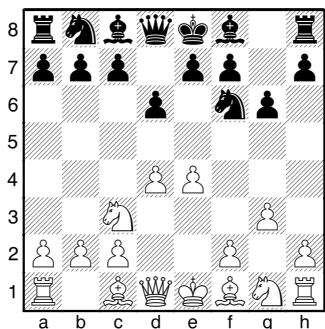
4. ...♔g7



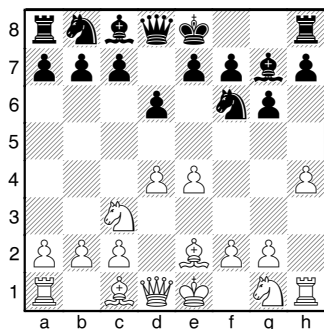
Classical

4.g3 (D)

4.♙e2 ♔g7 5.h4 (D)

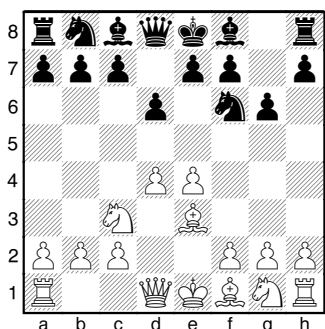


Philidor or Ruy Lopez Pirc



5. ...c5 6.dxc5 ♖a5

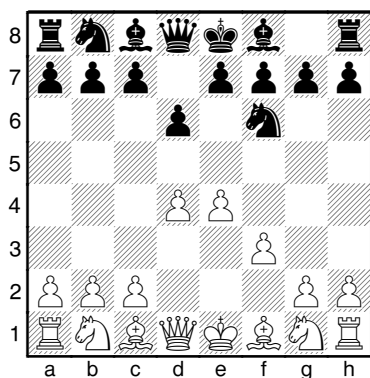
4.♙e3 (D)



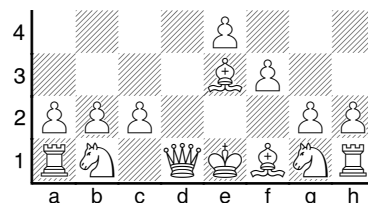
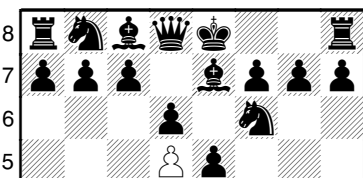
4. ...c6

Pirc D. 1.e4 d6 2.d4 ♖f6 other 3.

1.e4 d6 2.d4 ♖f6 II) 3.f3 (D)

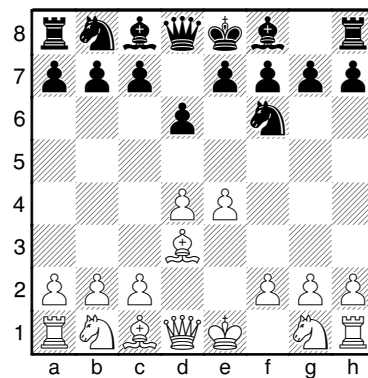


White is avoiding Pirc theory. For a black King's Indian player this means playing against the Sämisch Variation. Old Indian style the response is 3. ...e5 4.d5 (4.dxe5 dxe5 5.♙xd8 ♜xd8 6.♙c4 ♜e8 7.♙e3 ♞bd7 8.♞d2 ♙c5 is harmless). 4. ...♙e7 5.♙e3 (D)

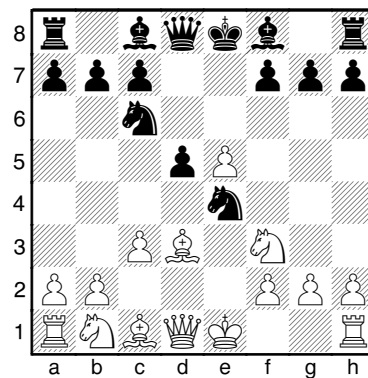


Black can continue a) 5. ...♞h5 6.c4 ♙g5 b) 5. ...♞bd7. With White's e4-e5, Black's bishop is better placed on e7 than on g7: helps preventing a possible ♙g5 pin of the f6 knight; the bishop can also relocate after ...c7-c6, to b6; or can be exchanged via g5.

1.e4 d6 2.d4 ♖f6 III) 3.♙d3 (D)

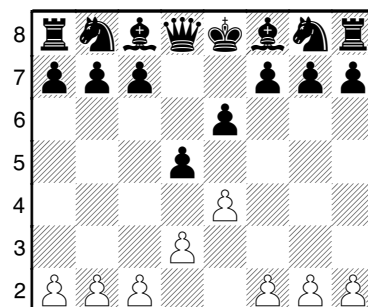


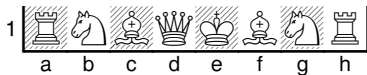
White decides to forego ♞c3 and possibly play c3. White is likely to develop his pieces with ♞f3, 0-0, ♙e1, h3 and so on. 3. ...e5 4.c3 d5! 5.dxe5 ♞xe4 6.♞f3 ♞c6 (D)



1.e4 e6

1.e4 e6 2.d3 d5 (D)



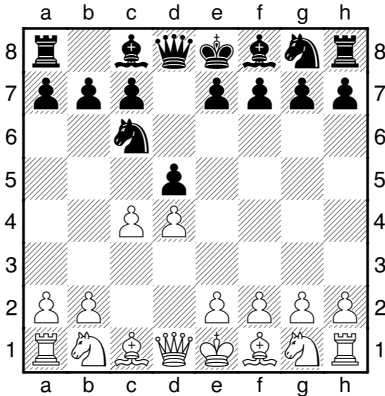


3. ♘d2 ♞f6 4. ♗gf3 c5 5. g3 ♞c6 6. ♖g2 ♚e7 7. 0-0
(King's Indian Attack)

1.d4 d5

1.d4 d5 I) 2.c4 ♞c6

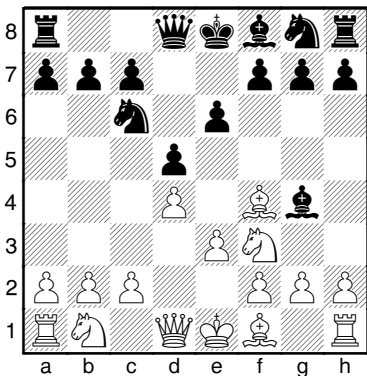
Tschigorin Defense (D)



a) 3. ♘c3 dxc4 4. e3 (d5, ♗f3) ...e5 (... ♞e5, ... ♞f6)
b) 3. ♗f3 ♚g4 4. cxd5 ♚f3 5. gxf3 (dxc6) (... ♚xc4)
6. (♗c3) c) 3.cxd5 ♜xd5 4. ♗f3 (e3) e5 (...e5) 5.
(♗c3) (... ♚g4)

1.d4 d5 II) 2. ♗f3 ♞c6

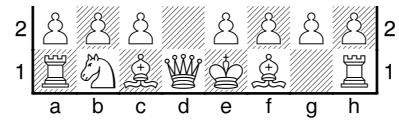
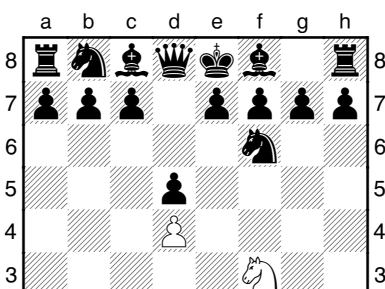
Tschigorin Defense 3. ♖f4 (3. ♖g5, 3.e3) 3. ... ♚g4
4.e3 e6 (D)



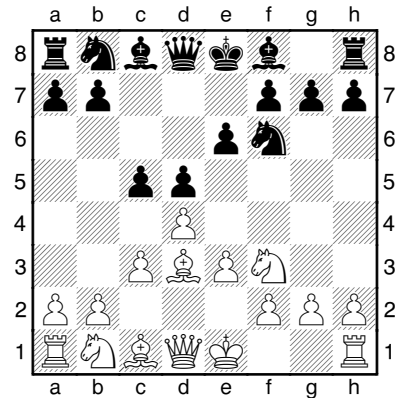
1.d4 d5 III) 2.e3 ♞f6

1.d4 d5 IV) 2. ♗f3 ♞f6

Colle System (D)

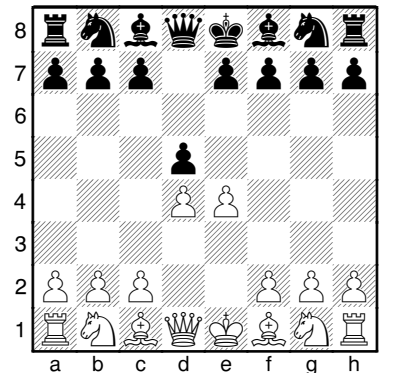


3.e3 e6 4. ♖d3 c5 5.c3 Colle-Koltanowski
System (D)



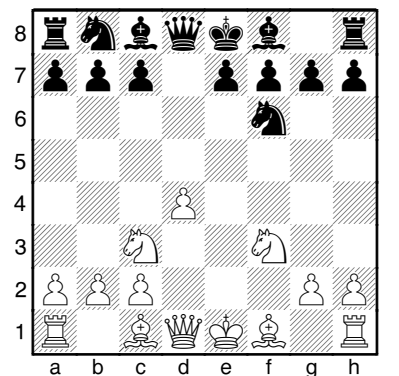
1.d4 d5 V) 2.e4

Blackmar-Diemer Gambit (BDG) (D) Can also arise
from 1.e4 d5 2.d4 (see above)



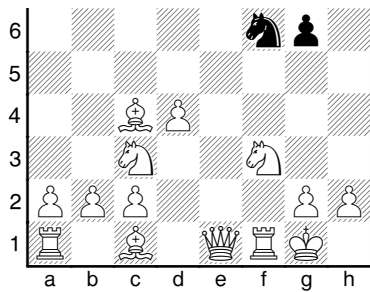
I) 2. ...dxe4

Blackmar-Diemer Gambit (BDG accepted) 3. ♘c3
♞f6 4.f3 exf3 5. ♗xf3 (D)

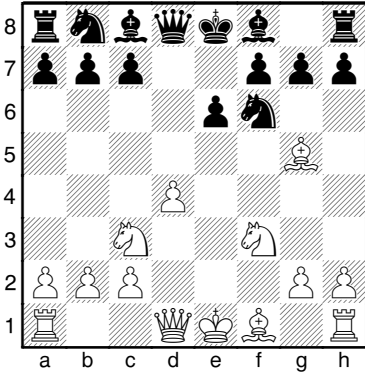


a) 5. ...g6 6. ♖c4 ♚g7 7.0-0 0-0 8. ♜e1 (D)

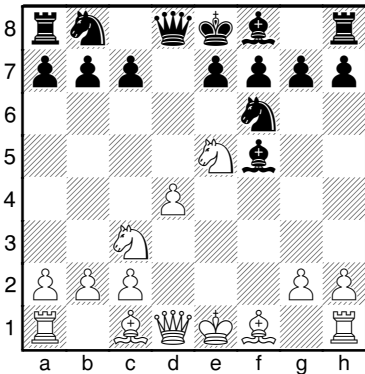




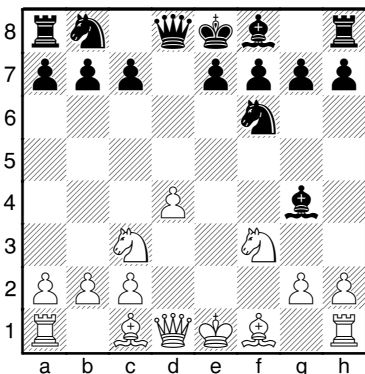
White is planning to bring the queen to h4. 8. ...♘c6
b) 5. ...e6 6. ♗g5 (D)



6. ...h6 7. ♗xf6! ...♙xf6 8. ♖c4 ♗d6 9.0-0 ♙d8 c) 5.
...♗f5 6. ♘e6 (D)



Black has a range of options, 6. ...e6 being the
safest. 7.g4 ♗g6 c) 5. ...♗g4 (D)



6.h3 ♗xf3 7. ♙xf3 c6 8. ♖e3.

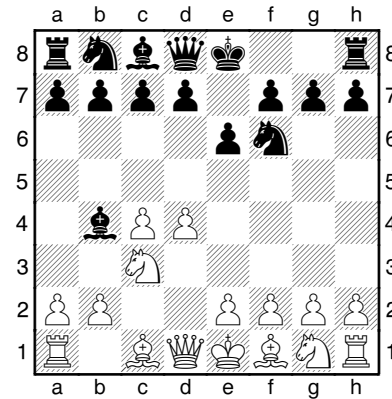
II) 3. ♘c3 (BDG declined)

- a) 3. ...e5
- b) 3. ...e6 Black trying to steer the game into the Rubinstein Variation of the French Defense (which is not bad for White).
- c) 3. ...g6 d) 3. ...♗f5 e) 3. ...♘f6

1.d4 ♘f6

1.d4 ♘f6 I) 2.c4 e6 3. ♘c3 ♗b4

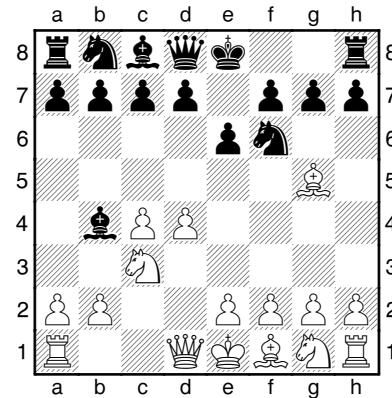
Nimzo-Indian Defense (D)



The bishop pins the knight in a fight for control of e4. Black is prepared to give up his bishop in exchange for free development and play against White's doubled pawns. Black is going to hope that his knights will be at least equal of White's bishop pair.

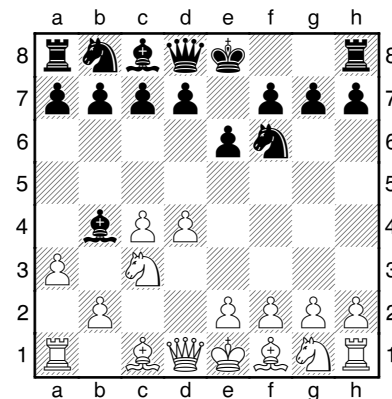
a) 4.e3 (Rubinstein Variation) ...c4 5. ♘f3 ♘c6
6. ♗d3 ♗xc3+ 7.bxc3 d6 (Hübner Variation) 8.e4
e5 9.d5 ♘e7 White's bishops are not very effective due to the closed centre.

b) 4. ♗g5 (Leningrad System) (D)

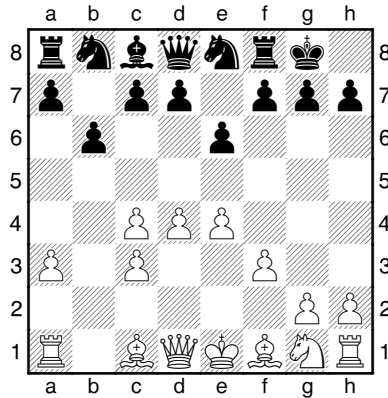


leads to sharp, obscure play after ...h6 5. ♗h4 c5.

c) 4.a3 (Sämisch Variation) (D)

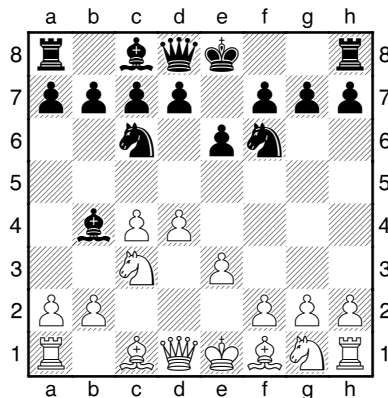


loses time for White and creates double pawns 4. ... dxc3+ 5. bxc3 0-0 6. f3 b6 7. e4 Ne8 (D)

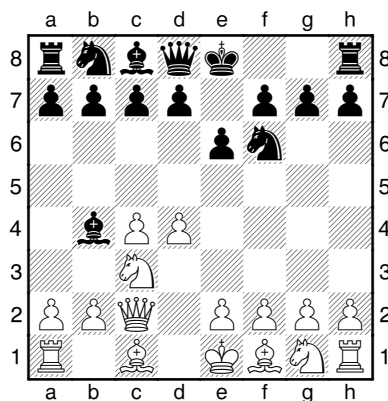


White's bishops and the centre are strong. Black aims at the weak c4 pawn with ... dxa6 and ... Nb8-c6-a5 . Other moves like ... c7-c5 followed by ... Nc8 or ... Nd6 also finish the c4-pawn off.

d) 4. e3 Nc6 (Taimanov Variation) (D)



e) 4. Qc2 (Classical or Capablanca Variation) (D)

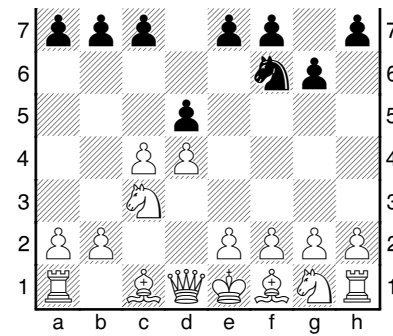


White is willing to waste time to prevent the doubling of pawns. 4. ...0-0 5. a3 dxc3+ 6. Qxc3 b6 when White's two bishops can easily become active but Black's lead in development and ability to hit the centre with ... c5 or ... d5 can compensate for this.

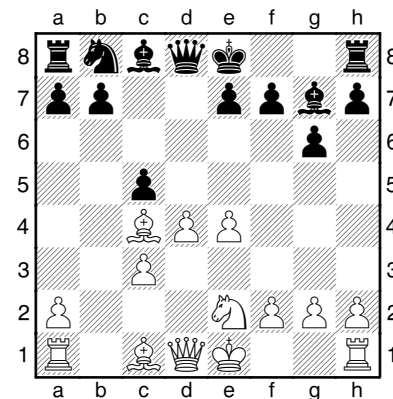
f) 4. Nf3 (Kasparov) ... c5 5. g3

1. d4 Nf6 II) 2. c4 g6

3. Nc3 d5 Grünfeld Defense (D)



a) 4. cxd5 (Exchange Variation) also possible 4. Qg5 4. Qf5 4. ... Nxd5 5. e4 Nxc3 6. bxc3 Black is trying to force a pawn advance by d4-d5 or e4-e5 . 6. ... Qg6 7. Qc4 or 7. Nf3 (Modern Exchange) 7. ...0-0 8. Ne2 (Classical Exchange) (D)



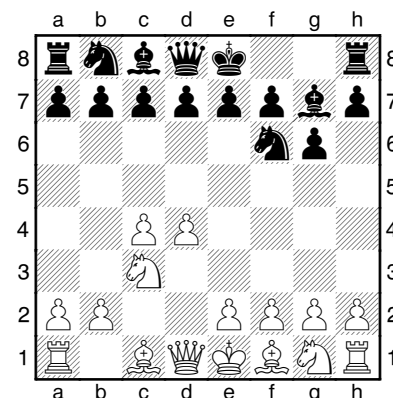
White is now able to meet ... Qg4 with f3 . 8. ... c5 9.0-0 Nc6 looking at d4. 10. Qe3 Nc7 11. Qc1 Nd8 12. Qd2 ...main theme: White to defend the centre, Black to attack it.

b) 4. Nf3 (Russian Variation) ... Qg7 5. Qb3 dxc5 6. Qxc4 Black aiming against the white queen as well as the d4 pawn.

c) 4. Qf4

1. d4 Nf6 III) 2. c4 g6 3. Nc3 Qg7

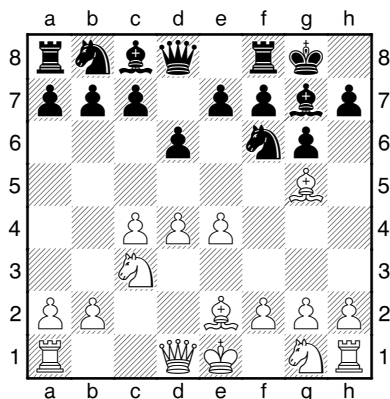
King's Indian Defense (D)



Black to aim for a share of the center by c7-c5 ; opening up the e-file with ... e7-e6 , or playing for queenside expansion with ... b7-b5 .

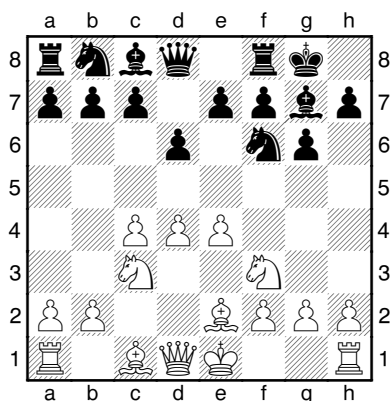
a) 4. e4 d6 Black deters White from e4-e5 , opens the diagonal for the queen's bishop, clears d7 for his

knight and prepares to strike with e5. **5. ♖e2 0-0**
6. ♗g5 (Averbach Variation) (D)

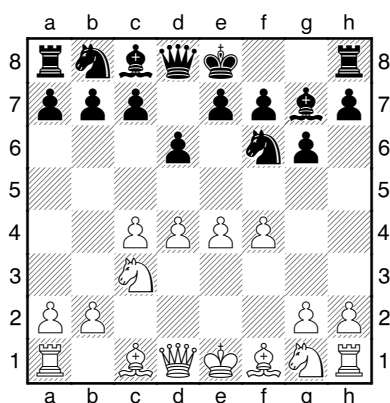


6. ...c5 claiming a share of the center. **7. d5** if Black now wants to play for ...b7-b5, he requires preparatory moves like ...♞b8-a6-c7 followed by ...a6, ...♜b8 and finally ...b5. **7. ...♞a5** threatening ...♞xe4. **8. ♗d2 e6** opening the e-file for his rooks.

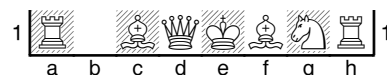
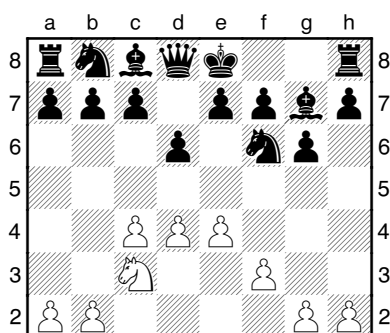
b) 4.e4 d6 5. ♖f3 0-0 6. ♗e2 (Classical System) (D)



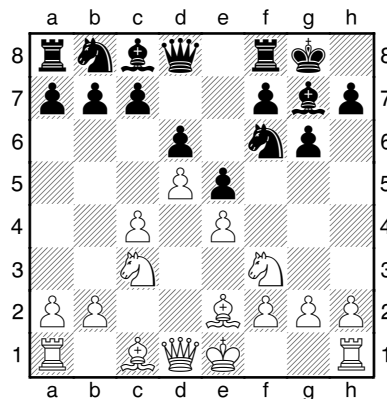
c) 4.e4 d6 5.f4 (Four Pawns Attack) (D)



d) 4.e4 d6 5.f3 (Sämisch Variation) (D)

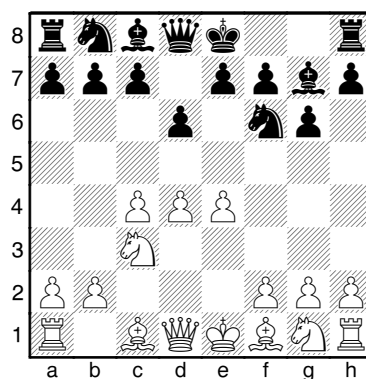


e) 4.e4 d6 5. ♖f3 0-0 6. ♗e2 e5 7.d5 (Petrosian's System) (D)

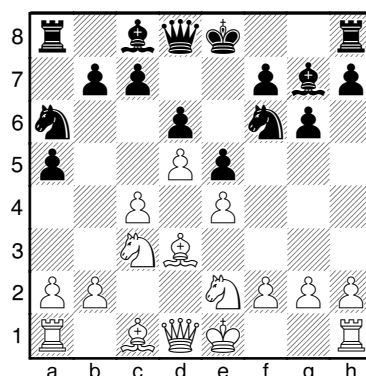


Also **7.0-0 ♞c6 8.d5 ♞e7 9. ♖e1 ♞d7** seeking play on the king-side, preparing for an f5-f5 advance. **10. ♗d3 f5 11. ♗d2 ♞f6 12.f3 f4** Black going all out for a kingside attack via ...g5, ...h5, and ...g4, while White will play the queenside with c4-c5 and ♜c1.

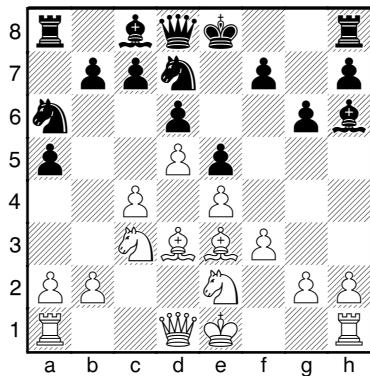
f) 4.e4 d6 5. ♗d3 (D)



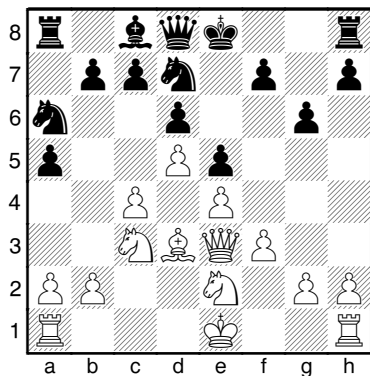
N.McDonald 'CTAOLT' p166: White planning ♗ge2, f2-f3 and ♗e3 when the centre is protected. This bishop also cannot be blocked in by a knight on e2. **5. ...e5** important. **6.d5 6.dxe5 dxe5** would be fine for Black since a hole on d4 would become accessible for a black knight. White might aim for a c4-c5 advance to capture on d6 and open the c-file for his rooks. **6. ...a5** preventing b2-b4 and thus above plans. **7. ♗ge2** so as to not obstruct the f-pawn, which is a good defender on f3 and a great attacker on f4. **7. ...♞a6** increasing the grip on b4 and c5 (D)



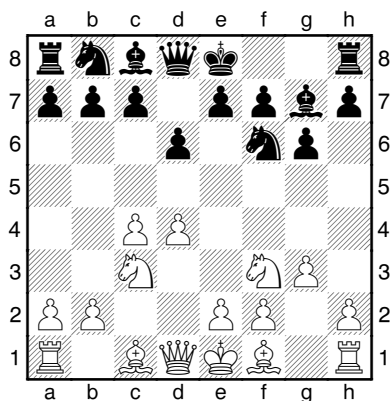
8.f3 a precaution: White wants to put his bishop on e3 but after 8. ♖e3 he would be hit by ... ♘g4 9. ♖d2 f5 with Black gaining time to launch a kingside attack. 9. ♖d2 is a must since 9.0-0 ♜h4! threatening mate on h2. 10.h3 ♘xe3 11.fxe3 is a positional disaster for White since the dark-squared bishop has no rival and will be dominant after say 11. ... ♗h6. 8. ... ♘d7 clearing the way for the f7-f5 pawn advance. White is forced to defend as otherwise the pawn could be captured with 0-0, bringing the rook to the f8 square. 9. ♖e3 which can be later supported by ♜d2. 9. ... ♗h6 10. ♖xh6 need not be feared. (D)



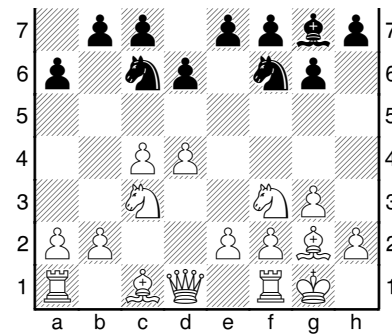
10. ♜d2! in case of 10. ♖xh6 ♜h4+ 11. ... ♜xh6 regains the bishop with a good position for the queen. 10. ... ♗xe3 11. ♜xe3 (D)



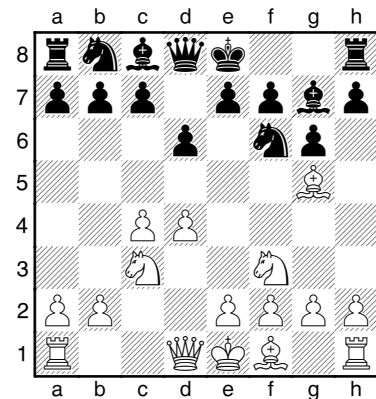
g) 4. ♘f3 d6 5.g3 (Fianchetto Variation) (D)



h) 4. ♘f3 d6 5.g3 0-0 6. ♖g2 ♗c6 7.0-0 a6 (Panno Variation) (D)

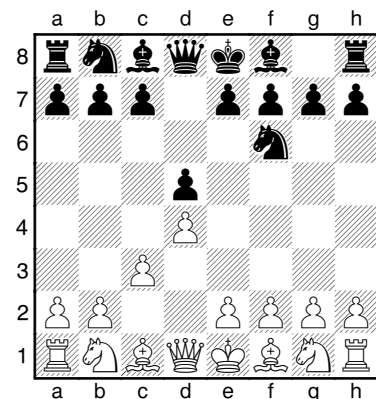


i) 4. ♘f3 d6 5. ♖g5 (Smyslov Variation) (D)



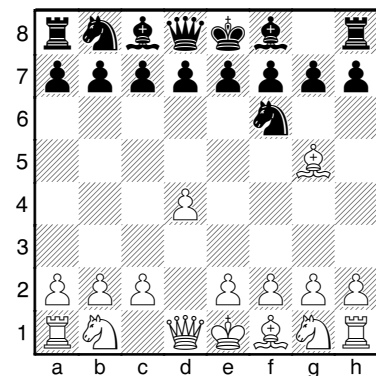
1.d4 ♗f6 IV) 2.c3 d5

Trompowski Attack (D)



1.d4 ♗f6 V) 2. ♖g5

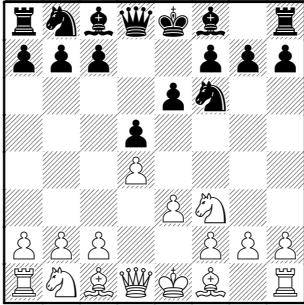
Trompowski (D)



2. ...c5 Black's most challenging and aggressive answer to the Tromp. White has three choices:

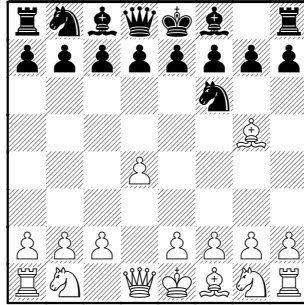
- a) 3. ♖c3 cxd4 4. ♕xd4 ♜c6 5. ♖h4 ♔a5! 6. 0-0-0 d6 7. e4 ♙e6 8. ♙xf6 gxf6 9. ♙b1 f5 10. exf5 ♕xf5
- b) 3. d5 ♜e4 4. ♙f4 ♕b6 5. ♖c1 c4 6. e3 ♕a5+ (5. ♙c1 e6 6. f3 ♜f6 7. c4 exd5 8. cxd5 c4)
- c) 3. ♙xf6 exf6

Colle:



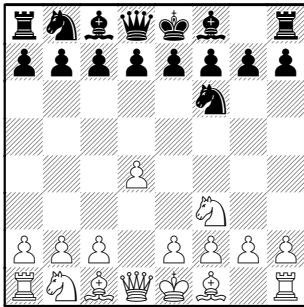
1.Nf3 d5 2.d4 Nf6 3.e4 e6

Trompowski:



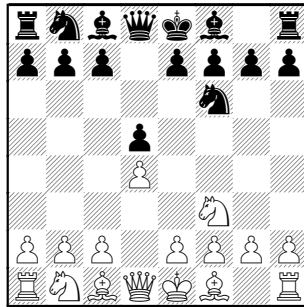
1.d4 Nf6 2.Bg5

Torre:



1.d4 Nf6 2.Nf3

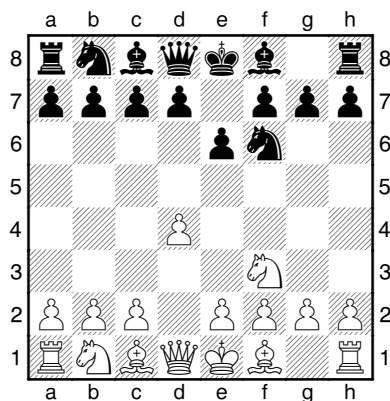
Colle-Koltanowski:



1d4 d5 2.Nf3 Nf6

1.d4 ♜f6 VI) 2. ♖f3 e6

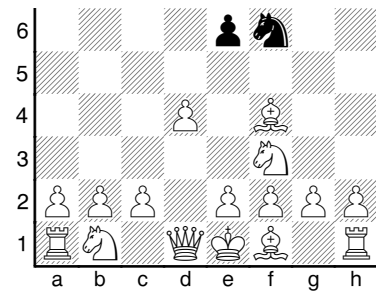
Torre Attack (D)



3. ♙g5 is the characteristic position. Transposition from KIA to Torre: 1. ♖f3 ♜f6 2.d4 e6 3. ♙g5

1.d4 ♜f6 VII) 2. ♖f3 e6 3. ♙f4

London System (D)



3. ...c5 planning to fianchetto the queen's bishop or to play 4. ... ♕b6 4.e3 b6 5. ♙d3 ♙b7 6. ♖bd2 ♙e7 7.c3 cxd4 (see L.Alburt COFBE p.381)

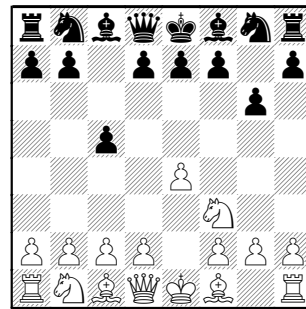
1. ♖f3

I) 1. ♖f3 d5 2.d4 ♜f6

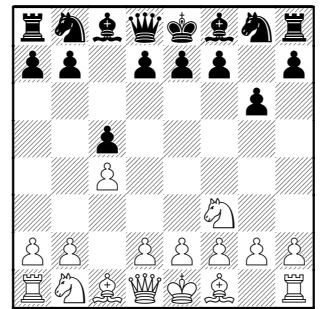
Colle System. See above.

II) 1. ♖f3 c5

2.e4 g6 (D)



2.c4 g6 (D)



See Accelerated Dragon, L.Alburt COFBE p. 58

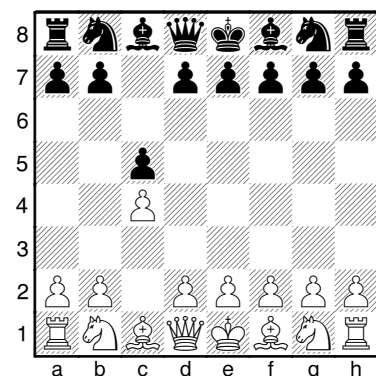
See Symmetrical English

2.g3 g6

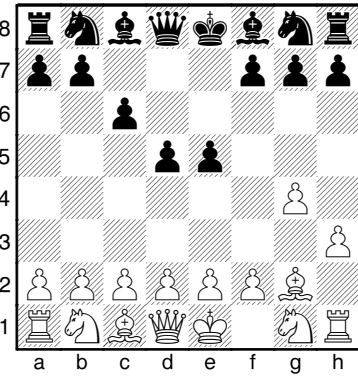
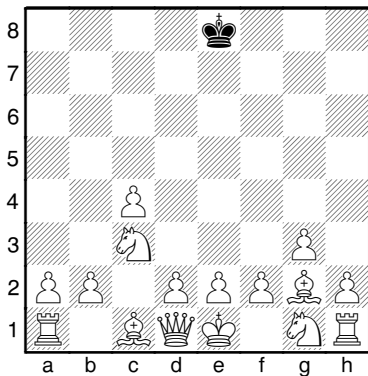
eventually reaching English or Closed Sicilian position.

1.c4 c5

(Symmetrical) English Opening (D)



For symmetrical openings Black must be wary of maintaining total symmetry for too long. The basic idea for White is to claim the d5-square. The effort is further supported by Nc3 , g2-g3 , Bg2 (D)



Opening Strategies for White

I) $2. \text{Nc3}$ g6 $3. \text{g3}$ Bg7 $4. \text{Bg2}$ Nc6 (see L.Alburt COFBE)

II) $2. \text{Nf3}$ g6 (see L.Alburt COFBE)

a) $3. \text{e3}$ Nf6 $4. \text{d4}$ cxd4 $5. \text{exd4}$ d5 $6. \text{Nc3}$
(Panov-Botvinnik line of Caro-Kann)

b) $3. \text{d4}$ cxd4 $4. \text{Nxd4}$ Nc6 ($5. \text{e4}$ Nf6 Maroczy Bind line) $5. \text{g3}$ Bg7 $6. \text{Nc2}$ ($6. \dots \text{d6}$ $7. \text{Bg2}$ Nd7 or $6. \text{Nxb3}$ d6 $7. \dots \text{Nd7}$ with a good game for Black) ($5. \text{Nc3}$ Bg7 $6. \text{Nc2}$ Nxc3+ $7. \text{bxc3}$ Qa5) $6. \dots \text{Qa5+}$ $7. \text{Nd2}$ Qc5 $8. \text{Nc3}$ Nf6 $9. \text{Nd2}$ $0-0$ good game for Black.

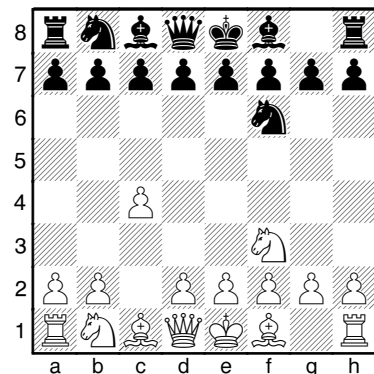
c) $3. \text{Nc3}$ Bg7 $4. \text{g3}$ Nc6 $5. \text{Bg2}$ e5 ($4. \text{e3}$ Nf6 $5. \text{d4}$ cxd4 $6. \text{exd4}$ d5 transposition to Panov Variation of the Caro-Kann Defense)

1. Nf3 Nf6

$1. \text{Nf3}$ Nf6 I) $2. \text{d4}$

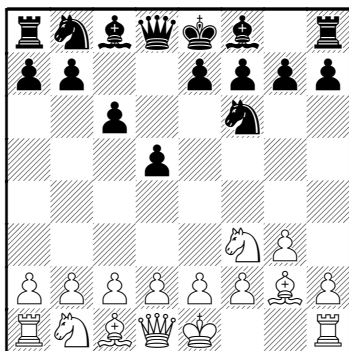
$1. \text{Nf3}$ Nf6 II) $2. \text{c4}$

(N.McDonald 'CTAOLT' p173) White wants to construct a large pawn centre from c4 to e4. (D)



1. g3 c5

See response to $1. \text{Nf3}$ or use method of Lasker against Reti: $1. \text{g3}$ d5 $2. \text{Nf3}$ Nf6 $3. \text{Bg2}$ c6 (D)

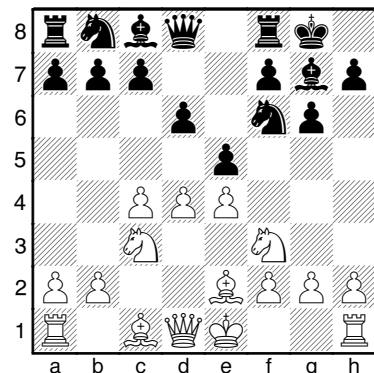


To block the diagonal. $4. 0-0$ Bf5

1. g4 d5

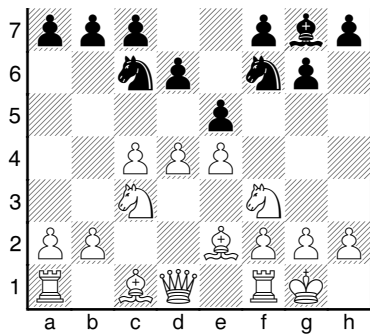
Grob's Opening. Both, $2. \text{Bg2}$ c6 $3. \text{h3}$ e5 and $2. \text{h3}$ e5 $3. \text{Bg2}$ c6 lead to the same position (D)

$2. \dots \text{g6}$ Black has two other options: a) $2. \dots \text{c5}$. If then $3. \text{d4}$ cxd4 $4. \text{Nxd4}$. b) $2. \dots \text{e6}$ followed by $3. \dots \text{d5}$ giving Black a secure set-up. $3. \text{Nc3}$ Bg7 $4. \text{e4}$ (King's Indian Defense) Note: $4. \text{d4}$ d5 (Grünfeld Defense). $4. \dots \text{d6}$ $5. \text{d4}$ $0-0$ $6. \text{Be2}$ e5 (D)

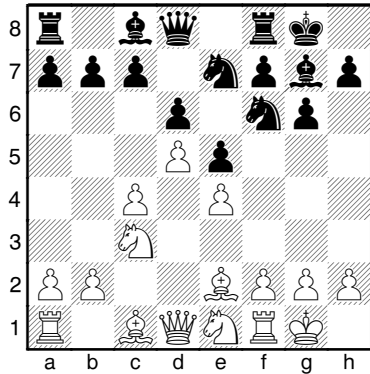


$7. 0-0$ Nc6 (D)

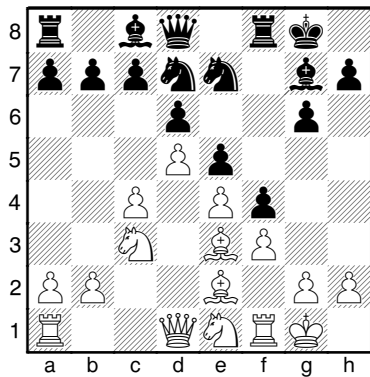




7. ...exd4 or 7. ...♞bd7 8. ♖e1 exd4 9. ♟xd4, breaking down the pawn barrier is possible. **8.d5** ♞e7 with the plan to activate the knight on g6 once the kingside attack is under way. **9. ♟e1!** (D)



9. ...♞d7 the race for rival pawn attacks begins. **10. ♟e3** putting pressure on a7 and c5 and helping to shield the king from f2 once f2-f3. This would not be possible after 10. ♟d3 f5 11. f3 f4. **10. ...f5** planning to dismantle White's centre with 11. ...fxe4, which would give the knight on e7 a strong post. **11. f3 f4** (D)



12. ♟f2 g5 **13. a4** starting White's attack. **13. ...♞g6** **14. ♟d3 ♞f6** **15. c5** important strategic objective. **15. ...h5**

1. ♟f3 e5 2. d4

1. ♟f3 c5 2. e4

1. ♟f3 d5

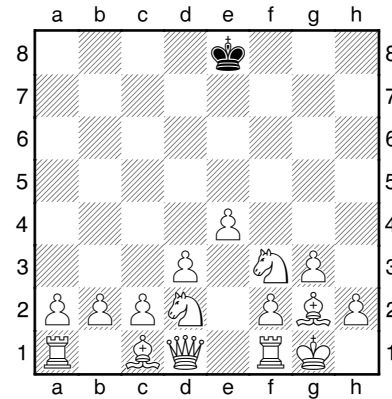
1. ♟f3 d5 I) 2. c4 Reti System

1. ♟f3 d5 II) 2. e4 Scandinavian Defense

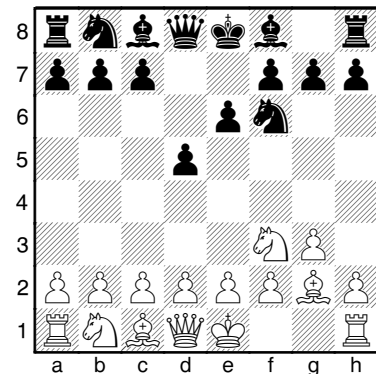
1. ♟f3 d5 III) 2. d4 ♞f6 Colle System

1. ♟f3 d5 IV) 2. g3 ... 3. ♟g2 ... 4. 0-0 ... 5. d3 ... 6. ♟bd2 ... 7. e4

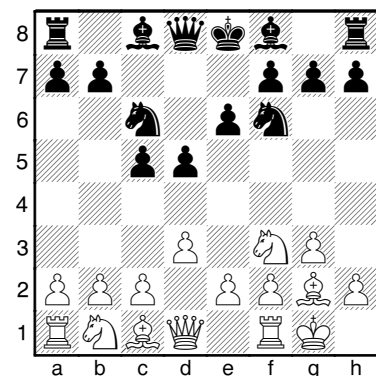
King's Indian Attack (KIA) (D)



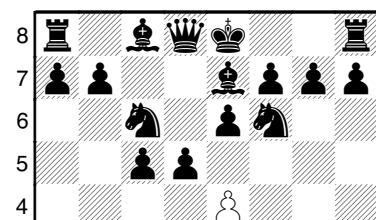
Example: (J. Silman 'CBOCS'): 1. ♟f3 d5 2. g3 e6 3. ♟g2 ♞f6 (D)

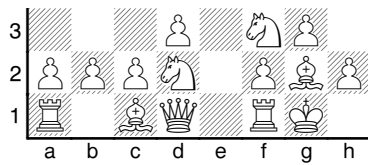


4. 0-0 c5 5. d3 ♞c6 (D)

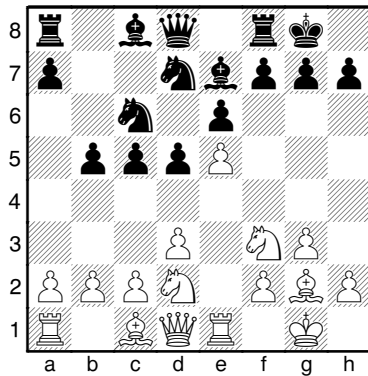


6. ♟bd2 ♟e7 7. e4 (D)

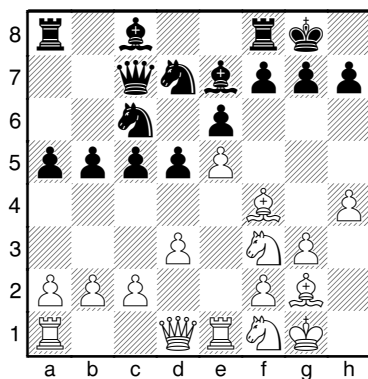




7. ...0-0 8.e5 Nf6 9. Bc1 b5 (D)



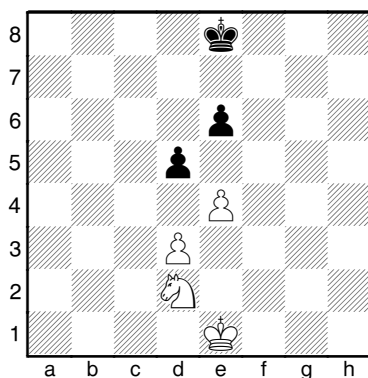
10. Nf1 Qc7 11. Bf4 a5 12.h4 (D)



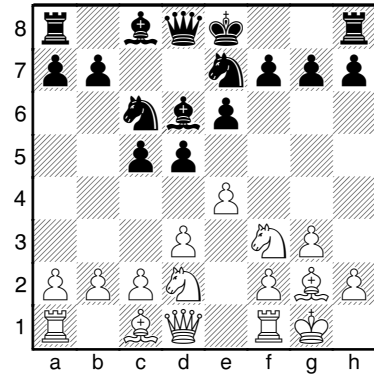
Black will seek further queenside space with ...b5-b4 followed by ...a4-a5-a3, etc. White tries to create weak dark-squares in Black's kingside by h4-h5-h6 and Nf1-h2-g4. Aggressive play by White on the kingside tends to overshadow Black's activities.

KIA French Variation

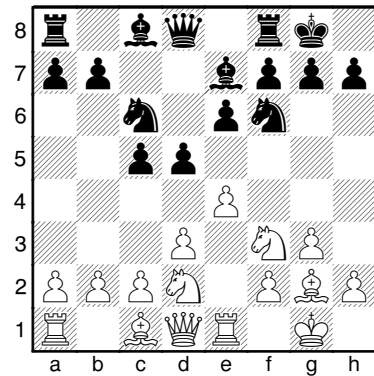
1.e4 e6 2.d3 d5 3. Nf3 d2 (D)



The white knight at d2 shields the white queen from an exchange after ...dxe4/dxe4. White can follow up with g3 into the standard KIA formation. (3. ... Nc6, 3. ... dxe4, 3. ... Nf6 4. Ngf3 Nc6) 3. ...c5 4. Ngf3 Nc6 5.g3 a) d6 6. Bg2 Nge7 7.0-0 (D)



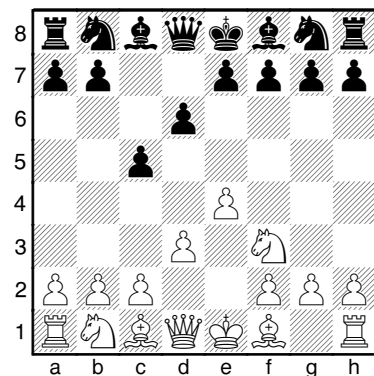
b) 5. ...Nf6 6. Bg2 Bf7 7.0-0 0-0 8. Bf1 (D)



This position is a typical KIA set-up that can be reached from the French, the Sicilian and the KIA move orders. 8. ...Qc7?! exposes the black queen after White pushes his pawn to e5 and posts a bishop on f4. 8. ...dxe4 9.dxe4 leaves White with an advantage since Black will have to play ...e5 while c4 could become an outpost for White's knight. 8. ...b5 9.e5 Nf6 standard position: Black pieces are cut off from the kingside but Black is attacking on the queenside. The pressure on Black's king is more dangerous.

KIA Sicilian Variation

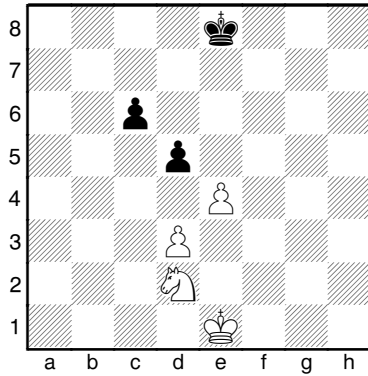
1.e4 c5 2. Nf3 d6 3.d3 (D)



Bobby Fischer played the KIA only against the Sicilian if Black committed himself to the center with ...e6. 3. ... Nc6 (3. ...g6 4.g3 Bg7 5. Bg2 Nf6) 4.g3 g6 5. Bg2 Bg7 6.0-0 e5 7.c3

KIA Caro-Cann Variation

1.e4 c6 3.d3 d5 3.♘d2 (D)

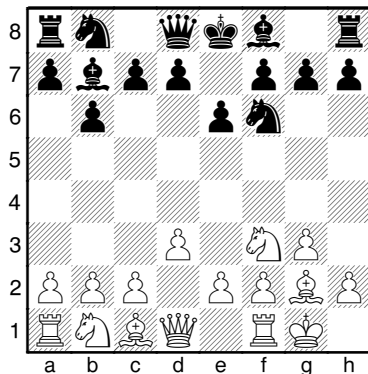


1. ...c5 is more aggressive than ...c6.

- a) 3. ...dxe4
- b) 3. ...♘f6
- c) 3. ...g6 4.f4 (4.♘gf3 ♕g7 5.g3)(4.g3 ♕g7 5.♕g2 e5 6.♘gf3 ♜e7 7.0-0 0-0)
- d) 3. ...♘d7

KIA Queen's Indian Formations

1.♘f3 ♜f6 2.g3 b6 3.♕g2 ♕b7 4.0-0 e6 5.d3 (D)

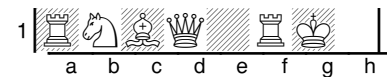
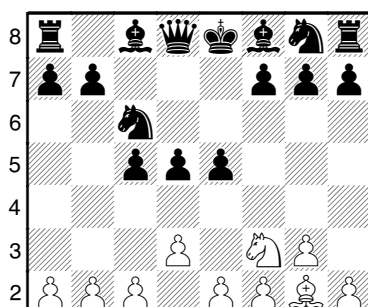


If Black does not play the centre than this increases the chances for White.

- a) 5. ...c5
- b) 5. ...d5 6.♘bd2 ♜bd7
- c) 5. ...♕e7

KIA King's Indian Reversed Formations

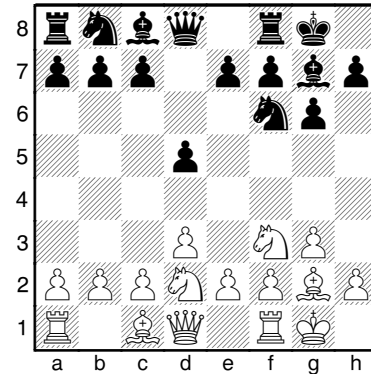
1.♘f3 d5 2.g3 c5 3.♕g2 ♜c6 4.0-0 e5 5.d3 (D)



a) 5. ...♕e7 b) 5. ...d6 c) 5. ...♜f6

KIA King's Indian Fianchetto Defense

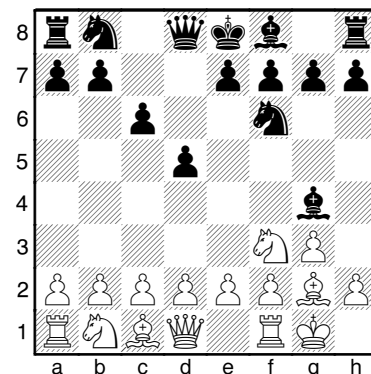
1.♘f3 d5 2.g3 ♜f6 3.♕g2 g6 4.0-0 ♕g7 5. d3 0-0 6.♘bd2 (D)



Black can hold his options open a while longer by hanging back in the center. While White's position is standard, Black's position depends on where his e-, d- and c-pawns end up.

KIA Keres System

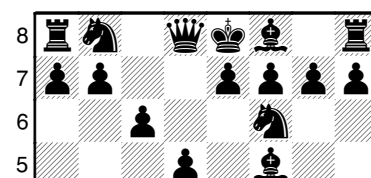
1.♘f3 d5 2.g3 ♜f6 3.♕g2 c6 4.0-0 ♕g4 (D)

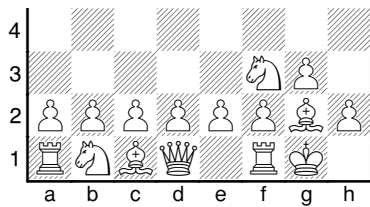


The aggressive bishop posting on g4 is apparently Black's most effective defense against the KIA. The key idea is that the bishop is developed before ...e6, which makes a kingside attack more difficult. 5.d3 ♜bd7 6.♘bd2 e5 a) 7.c4 b) 7.e4 ♕d6 c) 7.h3 ♕h5 8.e4 dxe4 9.dxe4 ♕c5

KIA Lasker System

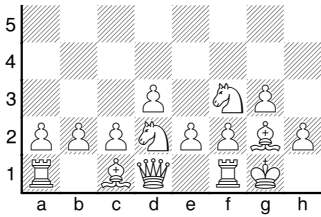
1.♘f3 d5 2.g3 ♜f6 3.♕g2 c6 4.0-0 ♕f5 (D)



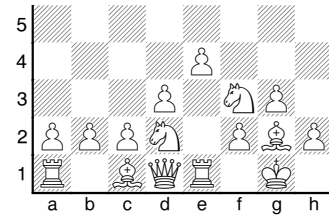


Slightly better for White than the previous position. Black's basic idea is the same, first developing the bishop before ...e6 but the bishop is subject to attack after White's inevitable e4.

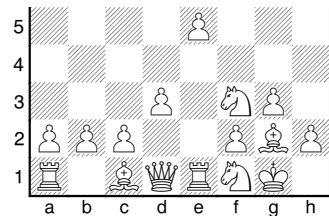
White KIA Structures (D.Maddox)



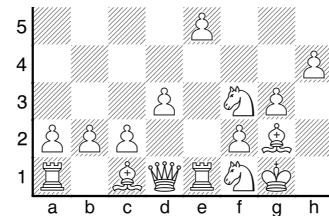
1.Nf3 2.g3 3.g2 4.0-0 5.d3 supports the thematic e4 push.



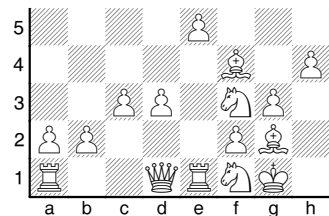
6.Nbd2 7.e4 8.Re1 aiming for e5.



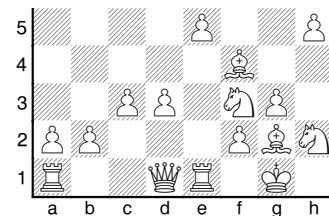
9.e5 10.Nf1 heading for g4 via h2 or e3.



11.h4 helps controlling the dark squares around Black's king until the dark-squared bishops are exchanged.



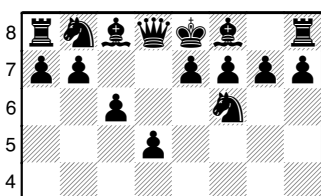
12.Bf4 overprotecting e5 until White can play Qd2 and Bg5 or Bh6 to force a trade of dark-squared bishops. 13.c3 to prevent ...Nb4 or ...Nd4.



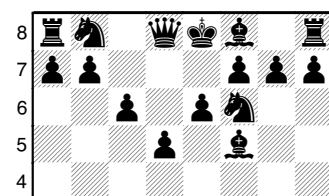
13.c3 14.Nfh2 heading for g4. 15.h5 heading for h6.

Black KIA Structures I (D.Maddox)

... Lasker's system: early development of the c8 bishop on to the h7-b1 diagonal and forming a c6-d5-e6 pawn wedge.

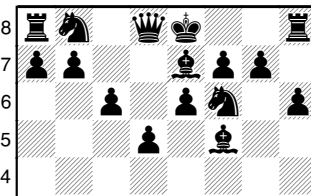


1. ...d5 2. ...Nf6 3. ...c6 reinforcing d5 and blunting



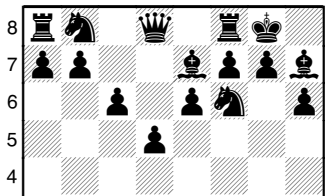
4. ...Bf5 5. ...e6. The bishop is developed before ...e6 shuts the

White's g2-bishop.

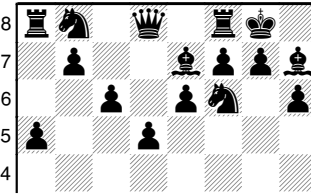


6. ...Be7 7. ...h6. Preparing for castling and providing a retreat for the bishop after White plays e4.

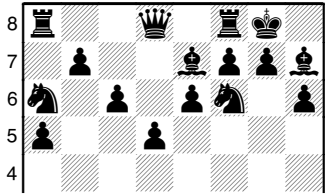
door.



8. ...Bh7 9. ...0-0. Retreating to safety but holding the b1-h7 diagonal. Castling brings the king to safety.



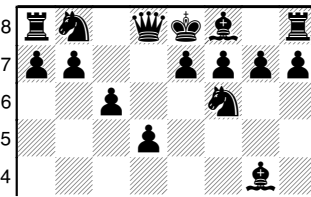
10. ...a5 discouraging queenside expansion.



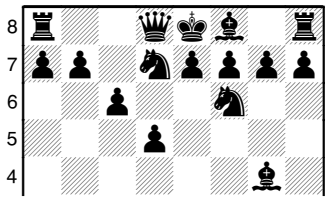
11. ...Na6 heading for c7.

Black KIA Structures II

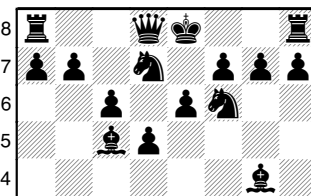
Similar to Lasker's system but developing the c8 bishop to a more aggressive square, putting pressure on White's f3 knight. White will find it more difficult to mount a kingside attack.



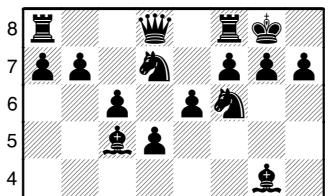
1. ...d5 2. ...Nf6 3. ...c6 4. ...Bg4. A plan popularized by Paul Keres.



5. ...Nbd7



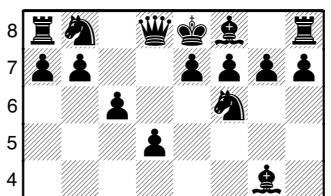
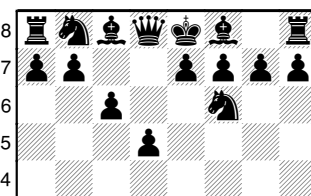
6. ...d5 7. ...Bc5. Building a solid pawn structure and developing the bishop to control a long diagonal.



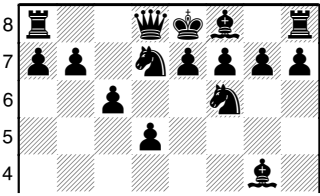
8. ...0-0. Black completes development with both bishops developed to aggressive squares.

Black KIA Structures III

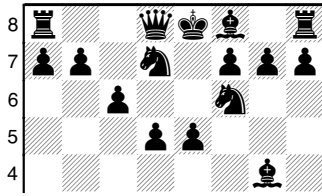
Similar to above but instead of developing the second bishop striking for the center with e5.



1. ...d5 2. ...Nf6 3. ...c6



4. ...Bg4

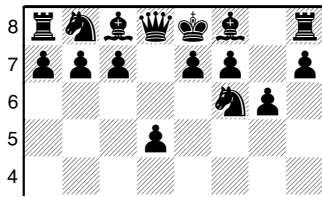
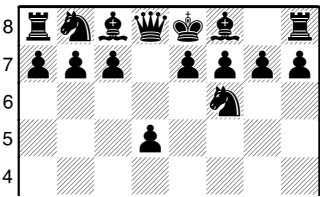


5. ...Nbd7

6. ...e5.

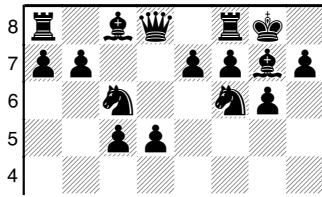
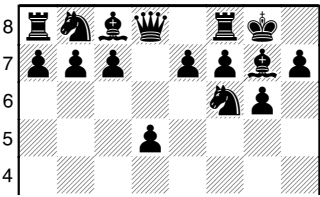
Black KIA Structures IV

The resulting position discourages White from undertaking a kingside attack and transfer the focus of the game to the center and the queenside for both players.



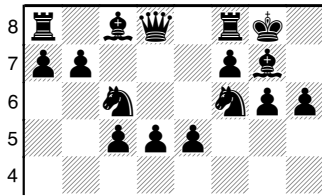
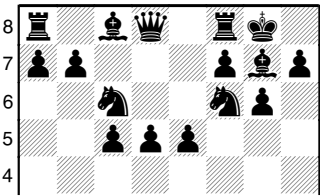
1. ...d5 2. ...Nf6

3. ...g6



4. ...Bg7 5. ...0-0. Copying White.

6. ...c5 7. Nc6. Assuming control of d4 and posting the knight for supporting nearby.

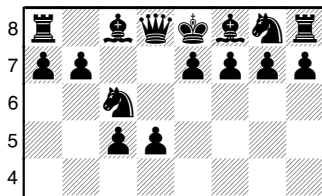
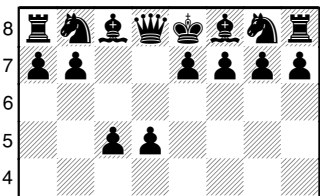


8. ...e5. A true King's Indian Reversed. Black establishes a very broad pawn front, challenging White for his advantage in space.

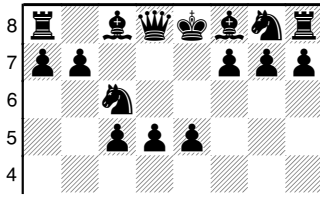
9. ...h6 keeping the knight off g5 or to force an aggressively posted bishop to find a new home.

Black KIA Structures V

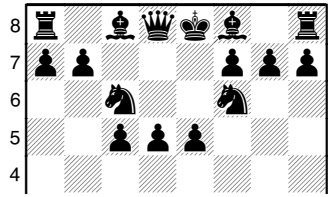
When Black decides to occupy a broad center without fianchettoing his kingside bishop, we have a full King's Indian Defence (KID) Reversed.



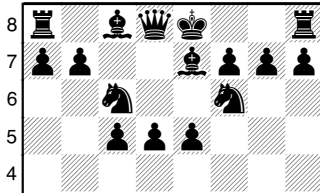
1. ...d5 2. ...c5 going for central dominance.



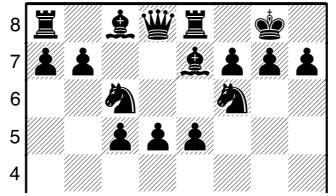
3. ...Nc6



4. ...e5



5. ...Nf6

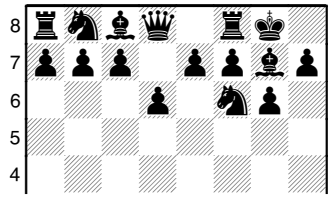
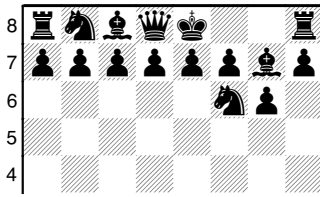


6. ...Be7

7. ...0-0 8. ...Re8 later supporting the pawn at e5, which is Black's most vulnerable point.

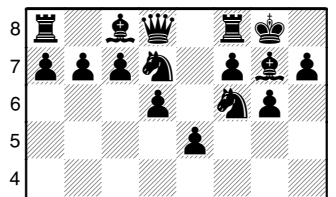
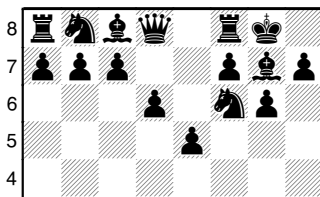
Black KIA Structures VI

Here Black mimics White's kingside structure without occupying the center.

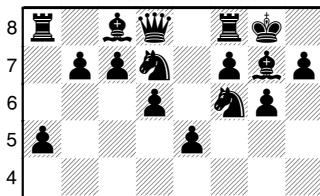


1. ...Nf3 2. ...g6 3. ...Bg7

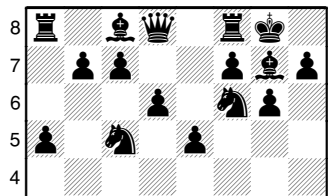
4. ...0-0 5. ...d6 Black shares White's faith in the King's Indian structure.



6. ...e5

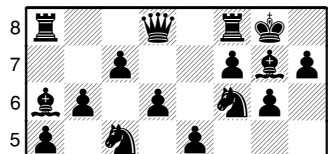
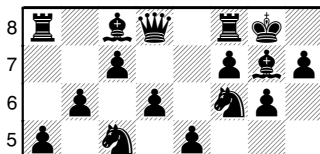


7. ...Nbd7



8. ...a5 restraining b2-b4 to secure c5 for Black's knight.

9. ...Nc5 joining forces with the knight on f6 to pressure e4.





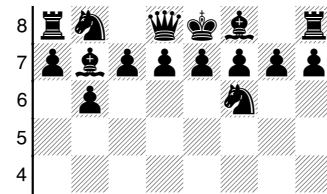
10. ...b6 giving the c8-bishop a choice of two strong diagonals.



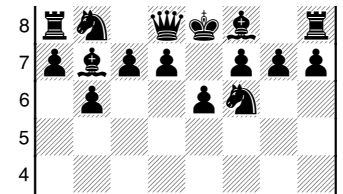
11. ...Ba6 assuming control of a long diagonal.

Black KIA Structures VII

Here Black pursues an aggressive queen's wing strategy, but without ...d5 his potential for expansion there is limited. A bishop at b7 opposes White's g2-bishop, but the lack of aggression in the center translates into a relatively passive queenside structure.



3. ...Bb7 opposing the bishop on g2.



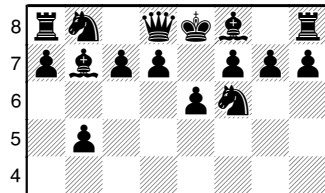
4. ...e6 a full Queen's Indian formation, planning ...d5.

Black KIA Structures IX

Here play tends to be quite and centralized.



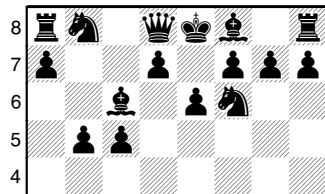
1. ...Nf3 2. ...b5 gaining space on the queenside.



3. ...Bb7 4. ...e6 neutralizing White's control of the a8-h1 diagonal.



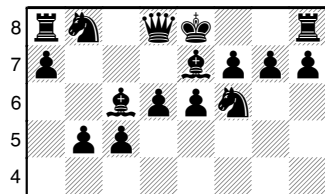
5. ...c5 the bishop at f8 supports Black's flank attack on d4.



6. ...Bc6 maintaining b5 while keeping his a-pawn free to advance.



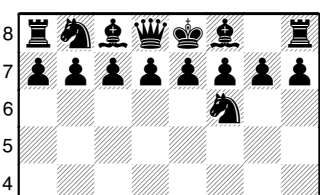
7. ...d6 reinforcing c5, controlling e5 and opening d7 for the b8 knight.



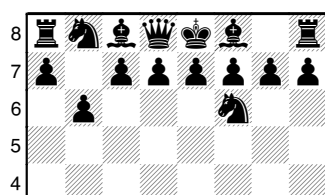
8. ...Be7 ready to press on with ...a5.

Black KIA Structures VIII

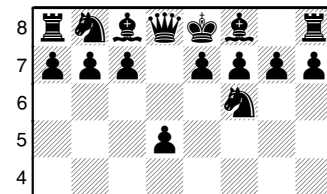
This Queen's Indian Structure is solid, but even less aggressive than the previous one. Black later chooses ...d5 or ...c5 or both. The major advantage of this approach is that it does not incur queenside weaknesses.



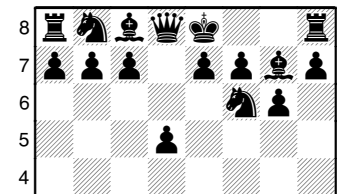
1. ...Nf6



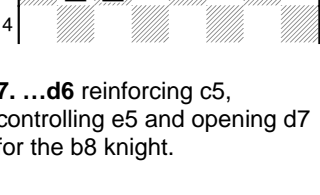
2. ...b6



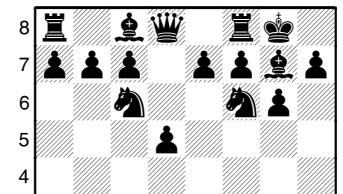
1. ...Nf6 2. ...d5



3. ...g6 4. Bg7 the king will be safer in this line than in others.



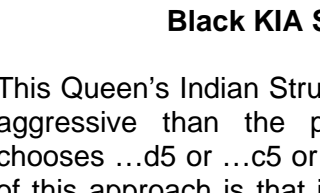
5. ...0-0



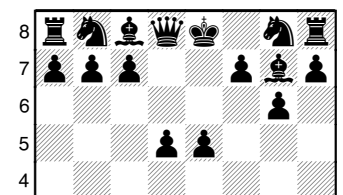
6. ...Nc6 instead of working on d4 with ...c5, Black plays for an early ...e5.

Black KIA Structures X

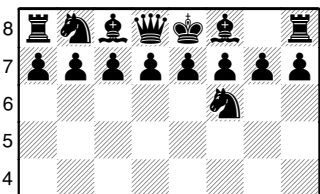
Here Black plays again for an early ...e5 but takes the g8-knight to e7 to keep the h8-a1 diagonal unobstructed for his g7-bishop.



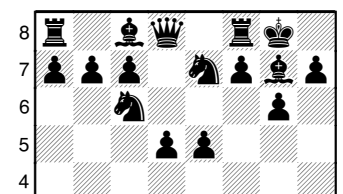
1. ...d5 2. ...g6



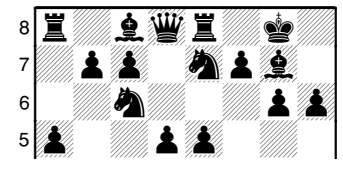
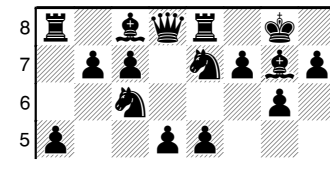
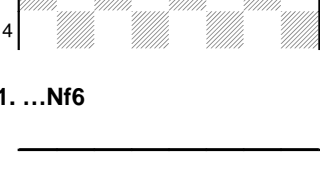
3. ...Bg7 4. ...e5



5. ...Ne7 6. ...0-0



7. ...Nbc6 foregoing ...c5 and hitting d4 once more.





8. ...a5 9. ...Re8 first discouraging queenside expansion by White and then supporting with the rook e5 and oppose a white rook at e1.

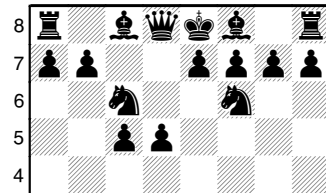
10. ...h6 controlling g5.

Black KIA Structures XI

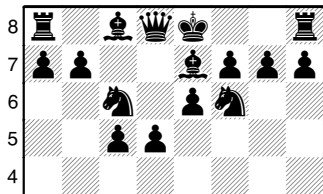
Black controls considerably more space on the queenside, but White creates enormous pressure on the black king.



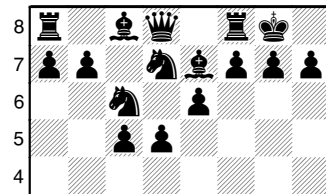
1. ...d5 2. ...c5 Black's most direct response in the center. 3. ...Nf6



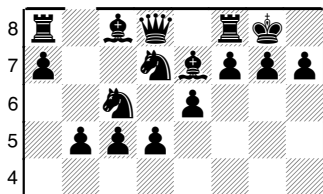
4. ...Nc6 both knights take up aggressive posts.



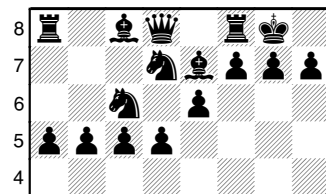
5. ...e6 locking in the c8-bishop 6. ...Be7



7. ...0-0 8. ...Nd7 forced by a pawn push to e5.

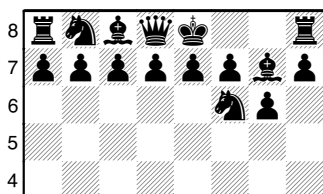


9. ...b5 With his forces cut off from the kingside, Black's best bet is to press forward on the queenside.

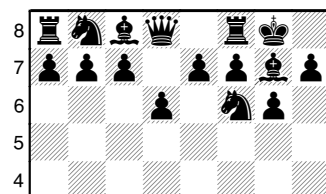


10. ...a5 White is going to attack on the kingside while Black is going to go for the queenside. A black mistake is dangerous.

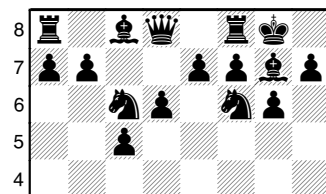
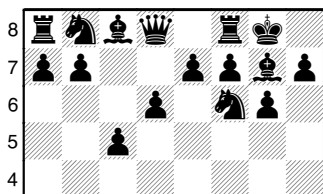
Black KIA Structures XII



1. ...Nf6 2. ...g6 3. ...Bg7

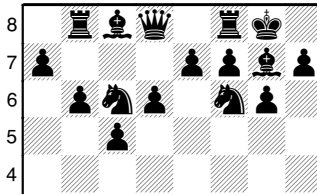


4. ...0-0 5. ...d6

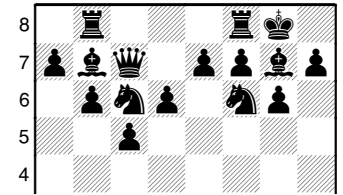


6. ...c5 instead of the symmetrical ...e5, Black chooses to keep the long diagonal clear for its g7-bishop. The odds for a white kingside attack are slight, and White has to watch for combinations on the long diagonal.

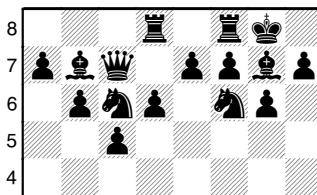
7. ...Nc6 Black increases its control over the dark center squares at e5 and d4.



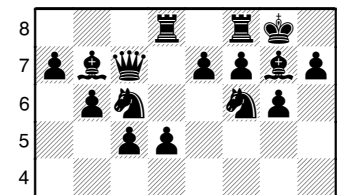
8. ...Rb8 removing the rook from the dangerous h1-a8 diagonal in preparation for 9. ...b6 and ...Bb7



10. ...Bb7 11. ...Qc7 connecting the black rooks.

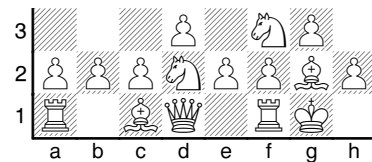


12. ...Rbd8 supporting ...d5



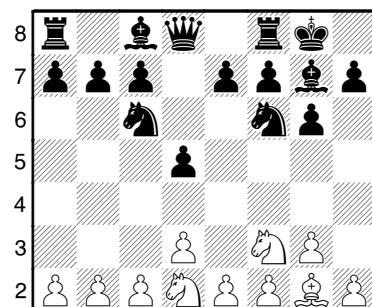
13. ...d5 with all its pieces developed, Black secures a broad center, neutralizing White's advantages.

KIA 1. ♘f3 2.g3 3.d3 4. ♖g2 5.0-0 6. ♗bd2 ... according to H.Eggers



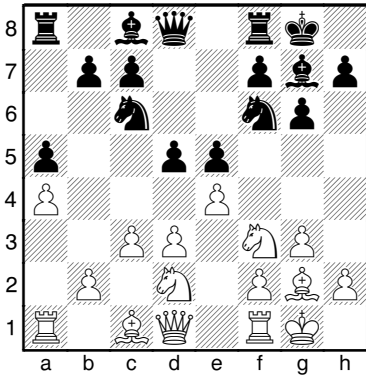
The King's Indian Attack (KIA) develops from Black's experience in the King's Indian Defence (KID). Other starting sequences are: 1.e4 2.d3 3. ♘d2 4.g3 5. ♖g2 6. ♗gf3 7.0-0 or 1. ♘f3 2.g3 3.d3 4. ♖g2 5.0-0

Type 1.1 – Black Kingside Fianchetto. A07 (D)



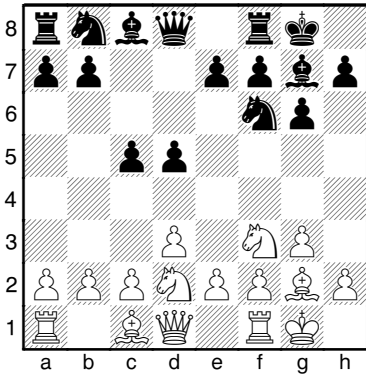


White's chances for success are bad. The statistically most common continuation for White is **7.e4 e5 8.c3 a5 9.a4** (D)



From H.Eggers' analysis the following continuation may be better: **7.c3 e5 8.e4 dxe4 9.♘xe4 ♗xe4**

Type 1.2 – Black Kingside Fianchetto. A08 (D)



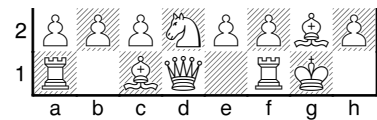
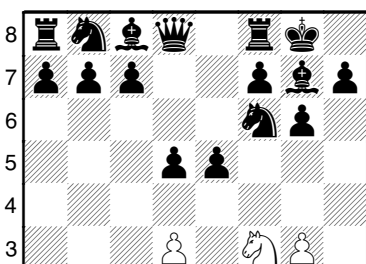
White's chances for success are bad. Transpositions:

- a) **7.e4 ♗c6** gives same position as in Type 1.5 after 7.e4 0-0
- b) **7.e4 ♗c6** gives same position as in Type 1.8 after 7.e4 d5

Continuations: **7.e4 ♗c6 8.c3**

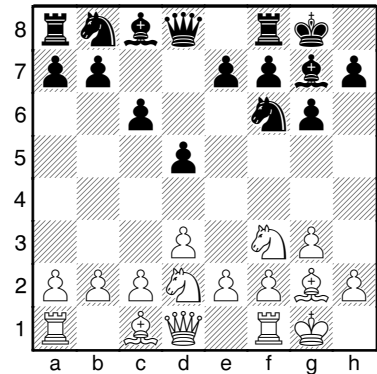
- a) **8. ...e5 9.♙e1 h6 10.exd5 ♗xd5 11.♘c4 ♗e8 12.a4**
- b) **8. ...dxe4 9.dxe4 h6 10.♙e2 ♗e6 11.h3**
- c) **8. ...d4 9.cxd4** White intending to play queenside **9. ...cxd4 10.a4** White wants to place his knight at c4, so first rules out ...b5.
- d) **8. ...b6 9.♙e1 dxe4**

Type 1.3 – Black Kingside Fianchetto. A07, B10 (D)



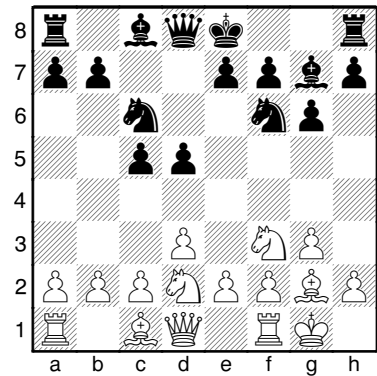
White's chances for success are good. **7.e4**

Type 1.4 – Black Kingside Fianchetto. A07 (D)



White's chances for success are good. **7.e4**

Type 1.5 – Black Kingside Fianchetto. A08 (D)

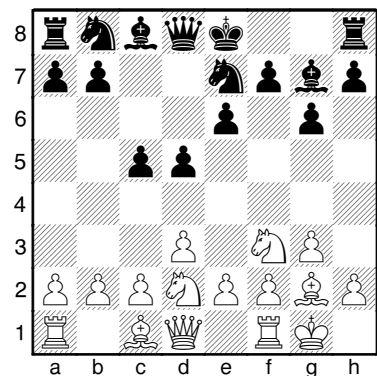


White's chances for success are not good. **7.e4 0-0** Transpositions:

- a) **7.e4 0-0** gives same position as in Type 1.2 after 7.e4 ♗c6
- b) **7.e4 0-0** gives same position as in Type 1.8 after 7.e4 d5

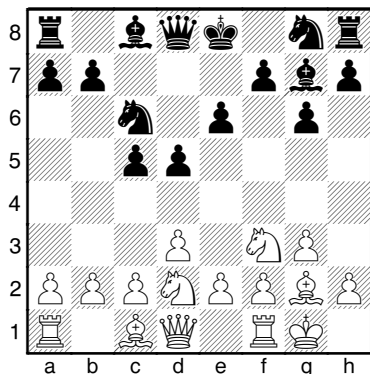
Fritz suggests **7.♗b3 b6 8.d4 c4 9.♗bd2 0-0 10.♗xc4 dxc4 11.♗e5 ♗xd4**

Type 1.6 – Black Kingside Fianchetto. A08 (D)



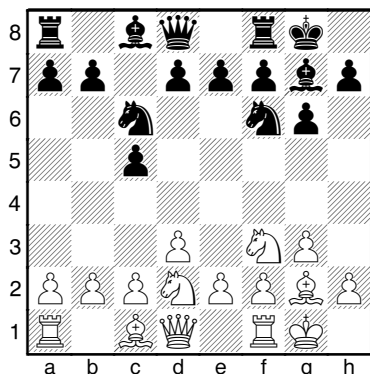
White's chances for success are very good. **7.e4** Transpositions: **7.e4 ♗bc6** gives the same position as in Type 1.7 after 7.e4 ♗ge7

Type 1.7 – Black Kingside Fianchetto. A08 (D)



White's chances for success are very good. **7.e4** **♖ge7** **8.♗e1 b6** Transpositions: **7.e4** **♗bc6** gives the same position as in Type 1.6 after **7.e4** **♗bc6**

Type 1.8 – Black Kingside Fianchetto A05, A08 (D)



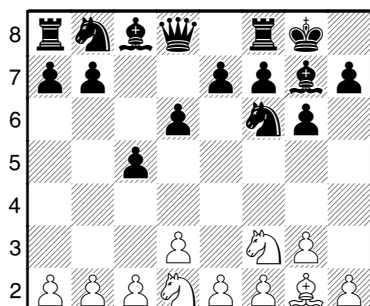
White's chances for success are good. **7.e4** Transpositions:

- a) **7.e4 d5** gives same position as in Type 1.2 after **7.e4** **♗c6**
- b) **7.e4 d5** gives same position as in Type 1.5 after **7.e4** **0-0**
- c) **7.e4 d6** gives same position as in Type 1.9 after **7.e4** **♗c6**

Continuations:

- a) **7.e4 d5** **8.♗e1**
- b) **7.e4 d5** **8.c3 dxe4** **9.dxe4 h6** **10.♖e2 ♗e6** **11.♘e1** preparing for f2-f4 and e4-d5 (11.h3)
- c) **7.e4 d5** **8.c3 d4** **9.cxd4 cxd4** **10.a4**
- d) **7.e4 d6** **8.a4** (8.c3 h6 9.♘e1 d5 10.exd5 **♗xd5** 11.♖b3 e6) **♗b8** **9.♗e1 b6**

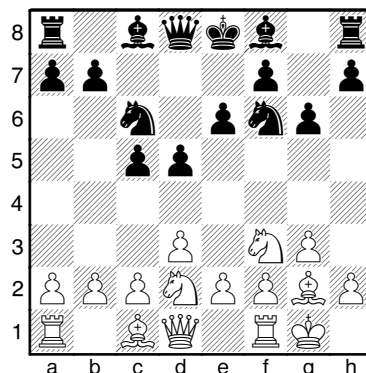
Type 1.9 – Black Kingside Fianchetto. A05 (D)



White's chances for success are good. Transpositions: **7.e4** **♗c6** leads to the same position as in Typ 1.8 after **7.e4** **d6** Continuations:

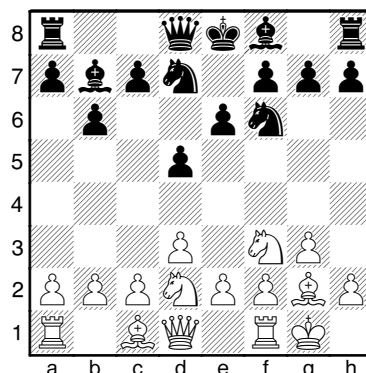
- a) **7.e4** **♗c6** **8.a4** (8.c3) **♗g4** **9.h3** **♗d7**
- b) **7.e4** **♗c6** **8.♗e1** **♗b8** **9.a4 b6** **10.♘c4 ♗b7** **11.h4**
- c) **7.c3** **♗c6** **8.e4 h6** **9.♗e1 ♗e6** **10.d4 cxd4** **11.cxd4** **♗b4**

Type 1.10 – Black Kingside Fianchetto. A08 (D)



White's chances for success are bad. **7.e4** **♗g7** **8.exd5**

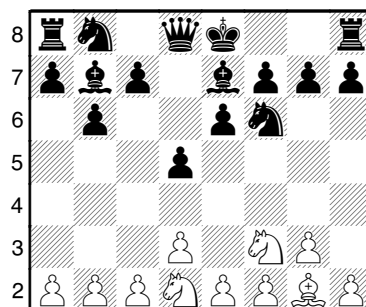
Type 2.1 – Black Queenside Fianchetto. A05 (D)



White's chances for success are bad. Continuations:

- a) **7.b3** **♗e7** **8.♗b2 0-0**
- b) **7.e4 dxe4** **8.♘g5**
- c) **7.c4 c6** **8.♗e1 ♗e7** **9.b3 0-0** **10.♗b2 ♗d6** **11.cxd5 cxd5**

Type 2.2 – Black Queenside Fianchetto A05, C00 (D)

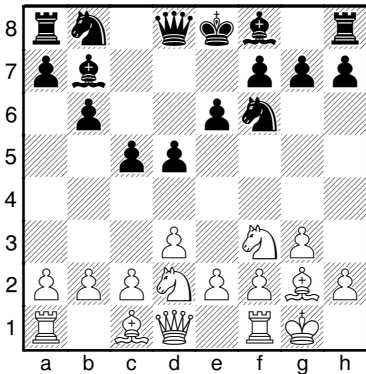




White's chances for success are good.
 Transpositions: **7.e4 c5** gives the same position as
 Type 2.3 after 7.e4 ♗e7 Continuations:

- a) **7.b3 0-0 8.a3 c5 9.♗b2 ♜c6 10.c4 ♕d6**
- b) **7.e4 dxe4 8.dxe4 0-0 9.♖e2 ♗a6 10.c4**
- c) **7.e4 c5 8.♖e1 ♜c6**
- d) ...

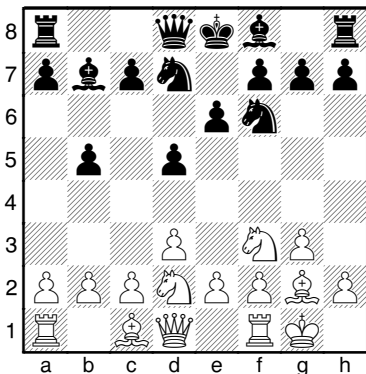
Type 2.3 – Black Queenside Fianchetto A05/A08, C00 (D)



White's chances for success are bad.
 Transpositions: **7.e4 ♗e7** gives the same position as
 Type 2.2 after 7.e4 c5 Continuations:

- a) **7.e4 ♗e7 8.♖e1 ♜c6 9.e5 ♜d7 10.h4**
- b) **7.♖e1 ♜c6 8.h3 a6 9.e4 ♗e7 10.exd5 ♜xd5 11.♞c4 0-0**
- c) **7.e4 ♜c6 8.♖e1**

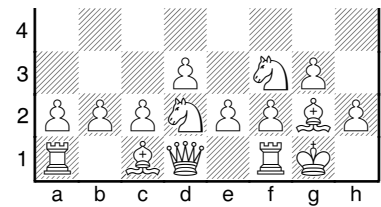
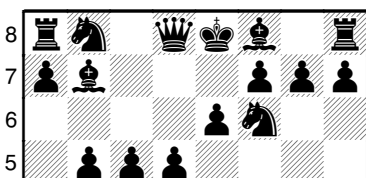
Type 2.4 – Black Queenside Fianchetto. A05 (D)



White's chances for success are bad.
 Continuations:

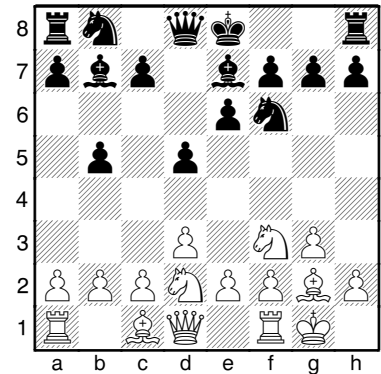
- a) **7.e4 dxe4 8.♞g5 ♗e7 9.♞dxe4**
- b) **7.e4 dxe4 8.♞g5 ♜c5 9.♞gxe4**
- c) **7.♖e1 a6 8.h3 c5 9.e4 dxe4 10.dxe4 e5 11.c4 ♗c6**

Type 2.5 – Black Queenside Fianchetto. A05 (D)



White's chances for success are about equal to
 Black's. Transpositions: **7.e4 ♗e7** gives the same
 position as Type 2.6 after 7.e4 c5 Continuations:
7.e4 ♗e7 8.exd5 ♗xd5 (♞xd5) 9.c4 bxc4 10.dxc4

Type 2.6 – Black Queenside Fianchetto. A05 (D)



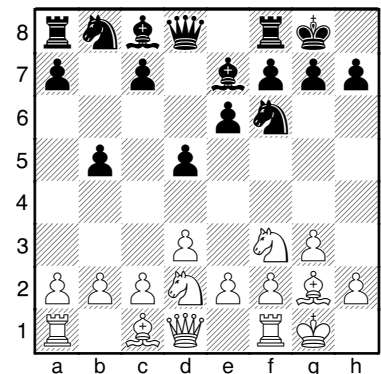
White's chances for success are good.
 Transpositions:

- a) **7.e4 c5** gives the same position as in Type
 2.5 after 7.e4 ♗e7
- b) **7.e4 0-0** gives the same position as in Type
 2.7 after 7.e4 ♗b7

Continuations:

- a) **7.e4 c5 8.♖e1 ♜c6**
- b) **7.a4 b4 8.c4 0-0 9.cxd5 exd5 10.b3 c5 11.♗b2 ♞fd7**
- c) **7.e4 0-0**

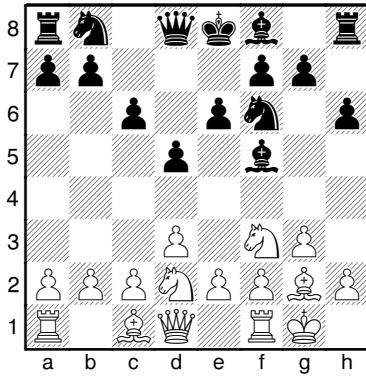
Type 2.7 – Black Queenside Fianchetto A07, C00 (D)



White's chances for success are good.
 Transpositions: **7.e4 ♗b7** gives the same position
 as Type 2.6 after 7.e4 0-0 Continuations:

- a) **7.e4 ♗b7 8.e5 ♞fd7 9.♖e1 c5**
- b) **7.d4 b4 8.♗b2 ♜c6 9.c4 bxc3**
- c) **7.e4 c5 8.♞b3 dex4 9.dxe4 ♗b7**

Type 3.1 – Schwarzer Bauernkeil. A07, A12 (D)



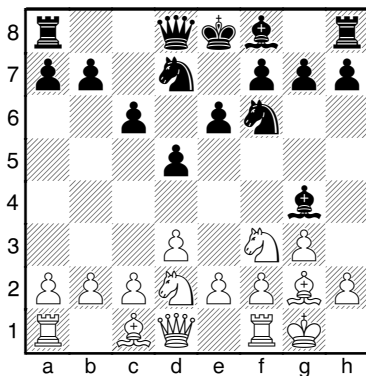
White's chances for success are good.
Transpositions:

- a) 7. ♖e1/b3 ♜e7 gives the same position as in Type 3.5 after 7. ♖e1/b3 h6
- b) 7. ♖e1/b3 ♞bd7 gives the same position as in Type 3.6 after 7. ♖e1/b3 h6

Continuations:

- a) 7. ♖e1 ♜e7 8.e4 ♜h7 9. ♞e5 ♞bd7 10. ♞xd7 ♞xd7 11.f4 0-0
- b) 7. ♖e1 ♞bd7 8.e4
- c) 7.b3 ♞bd7 8. ♞b2 ♜c5 9.h3 0-0 10.a3 ♜c7 11.c4 a5
- d) 7.b3 ♜e7 8. ♞b2 0-0

Type 3.2 – Schwarzer Bauernkeil. A07, A12 (D)

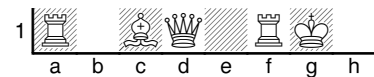
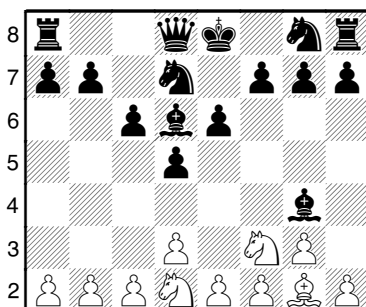


White's chances for success are not good.
Transpositions:

- a) 7.b3 ♜d6 gives the same position as in Type 3.3 after 7.b3 ♞gf6
- b) 7.e4 ♜e7 gives the same position as in Type 3.4 after 7.e4 ♞bd7

Continuations: See H.Eggers p.143

Type 3.3 – Schwarzer Bauernkeil. A07, A12 (D)



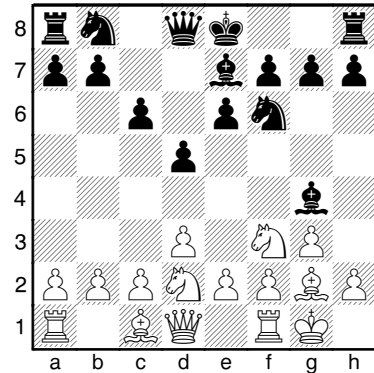
White's chances for success are bad.

Transpositions:

- a) 7.b3 ♞gf6 gives the same position as in Type 3.2 after 7.b3 ♜d6
- b) 7.e4 ♞ge7 gives the same position as in Type 3.7 after 7.e4 ♞bd7

Continuations: See H.Eggers p.149

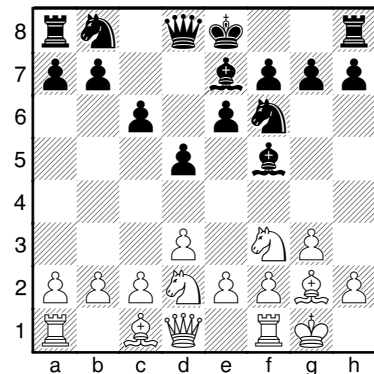
Type 3.4 – Schwarzer Bauernkeil. A07, A12 (D)



White's chances for success are good.

Transposition: 7.e4 ♞bd7 gives the same position as in Type 3.2 after 7.e4 ♜e7
Continuations: see H.Eggers p.154

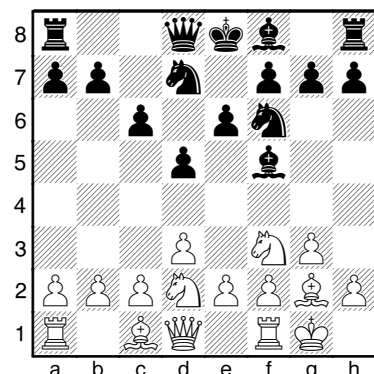
Type 3.5 – Schwarzer Bauernkeil. A07, A12 (D)



White's chances for success are good.

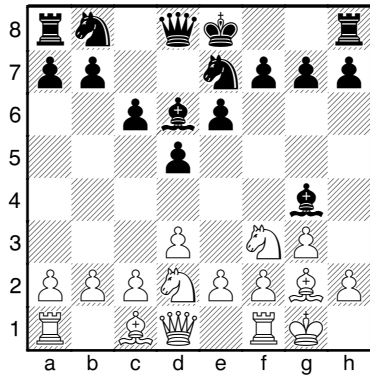
Transposition: 7. ♖e1/b3 h6 gives the same position as in Type 3.1 after 7. ♖e1/b3 ♜e7
Continuations: see H.Eggers p.158

Type 3.6 – Schwarzer Bauernkeil. A07, A12 (D)



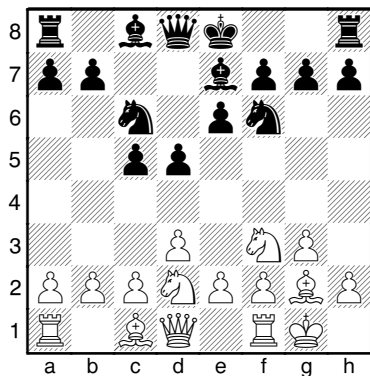
White's chances for success are good.
 Transposition: 7. ♖e1/b3 h6 gives the same position as in Type 3.1 after 7. ♖e1/b3 ♜bd7 Continuations: see H.Eggers p.162

Type 3.7 – Schwarzer Bauernkeil. A07, A12 (D)



White's chances for success are bad. Transposition: 7.e4 ♜bd7 gives the same position as in Type 3.3 after 7.e4 ♜ge7 Continuations: see H.Eggers p.166

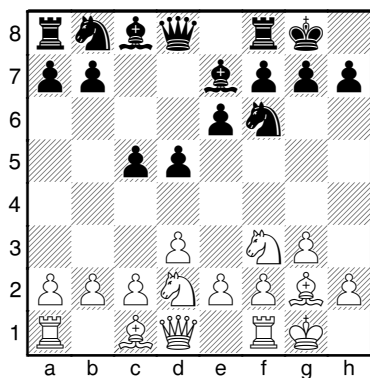
Type 4.1 – Black d/e/f Pawn Chain. C00 (D)



White's chances for success are bad. Transposition: 7.e4 0-0 gives the same position as in Type 4.2 after 7.e4 ♜c6 Continuations:

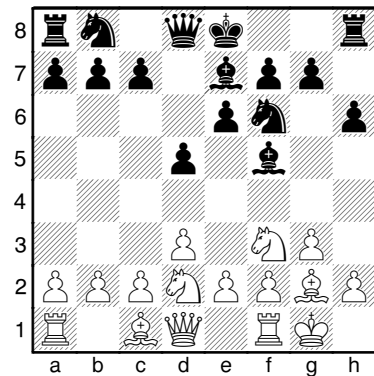
- a) 7.e4 0-0 8. ♖e1 ♜c7 9.e5 ♜g4 10. ♖e2
- b) 7.e4 b6 8. ♖e1 ♜b7 9.c3 ♜c7 10. ♜f1

Type 4.2 – Black d/e/f Pawn Chain. C00 (D)



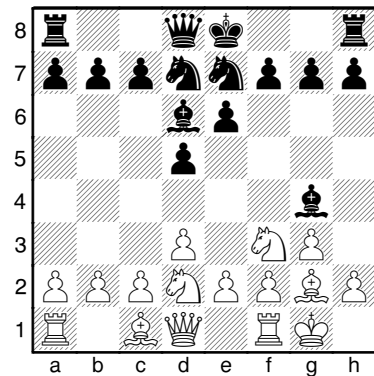
White's chances for success are good.
 Transposition: 7.e4 ♜c6 gives the same position as in Type 4.1 after 7.e4 0-0 Continuations: 7.e4 ♜c6 8. ♖e1 ♜c7

Type 4.3 – Black d/e/f Pawn Chain. A07, A12 (D)



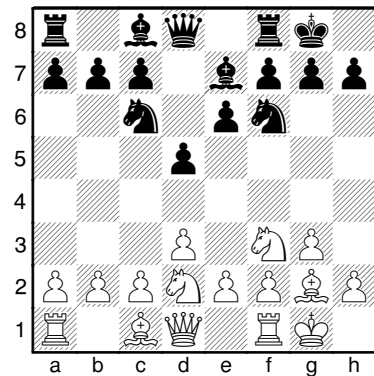
White's chances for success are bad.

Type 4.4 – Black d/e/f Pawn Chain. A07 (D)



White's chances for success are bad.

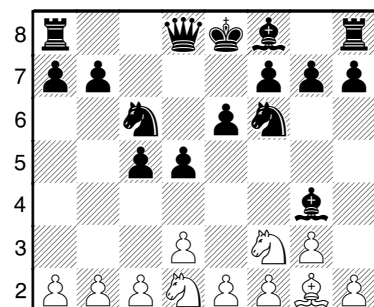
Type 4.5 – Black d/e/f Pawn Chain. A07 (D)

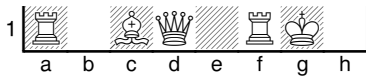


White's chances for success are good.
 Continuations:

- a) 7.e4 e5 8. ♖e1
- b) 7.e4 dxe4 8. ♜xe4 ♜xe4 9.dxe4 e5

Type 4.6 – Black d/e/f Pawn Chain. A08 (D)

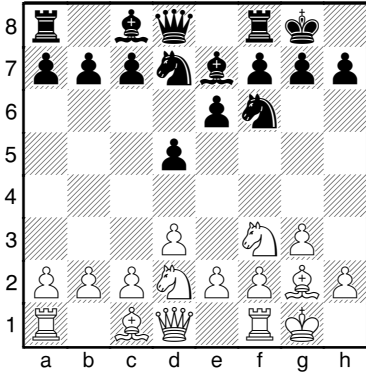




White's chances for success are very bad.
Continuations:

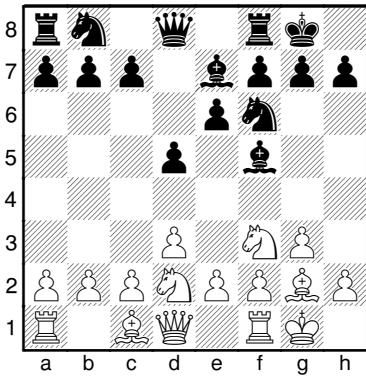
- a) 7.e4 ♟e7 8.h3
- b) 7.e4 ♟e7 8.c3
- c) 7.h3 ♟h5 8.c4
- d) 7.h3 ♟h5 8.c4
- e) 7.c4 ♟e7 8.h3

Type 4.7 – Black d/e/f Pawn Chain. A08 (D)



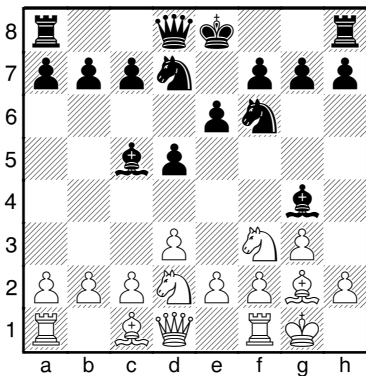
White's chances for success are very good.

Type 4.8 – Black d/e/f Pawn Chain. A07, A12 (D)



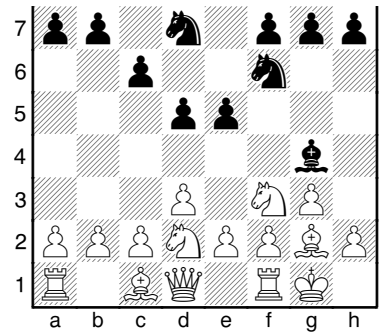
White's chances for success are equal.

Type 4.9 – Black d/e/f Pawn Chain. A07 (D)



White's chances for success are equal.

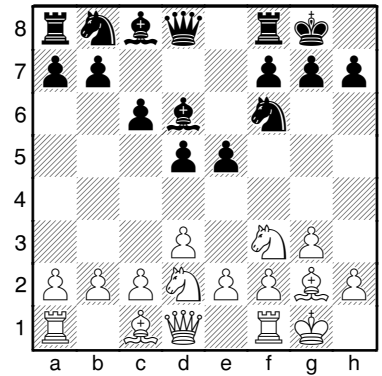
Type 5.1 – Black d/e Pawn Duo. A07 (D)



White's chances for success are equal.
Continuations:

- a) 7.e4 dxe4 8.dxe4
- b) 7.e4 ♟d6 8.h3 ♟h5
- c) 7.h3 ♟e6 8.♞g5 ♟f5 9.e4 ♟g6 10.d4 h6

Type 5.2 – Black d/e Pawn Duo. A00, B10 (D)

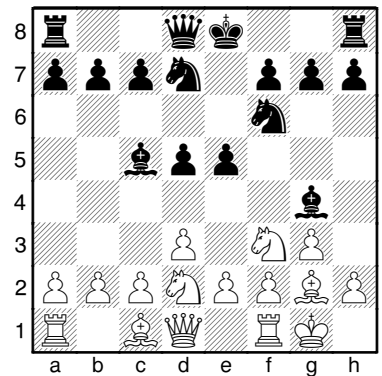


White's chances for success are bad. Continuations:

7.e4 Transpositions:

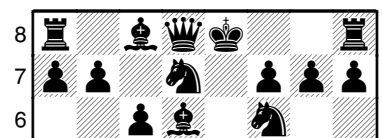
- a) 7.e4 ♞bd7 gives the same position as in Type 5.4 after 7.e4 0-0
- b) 7.e4 ♝e8 gives the same position as in Type 5.5 after 7.e4 c6

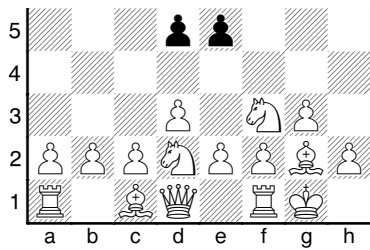
Type 5.3 – Black d/e Pawn Duo. A07 (D)



White's chances for success are bad. Continuations:
7.h3 ♟xf3 8.♞xf3 ♞e7 9.d4 exd4 10.♞xd4 0-0-0 11.♞b3

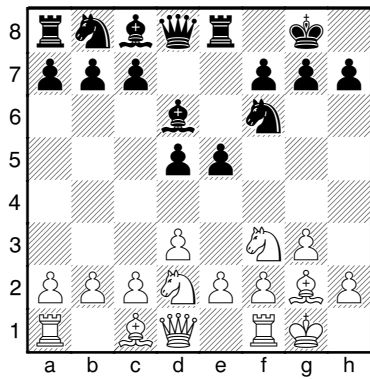
Type 5.4 – Black d/e Pawn Duo. B10 (D)





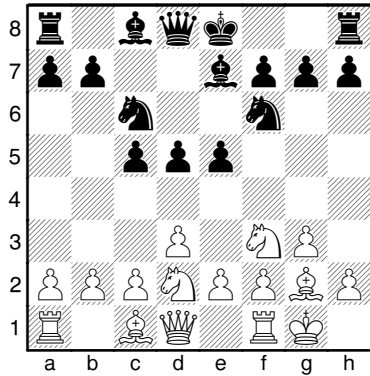
White's chances for success are good.
 Transpositions: **7.e4 0-0** gives the same position as in Type 5.2 after 7.e4 ♞bd7
 Continuations: **7.e4 0-0 8.exd5 cxd5 9.c4 ♞c5 10.d4 exd4 11.♞xd4 ♟g4**

Type 5.5 – Black d/e Pawn Duo. B10 (D)



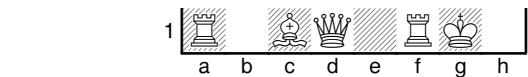
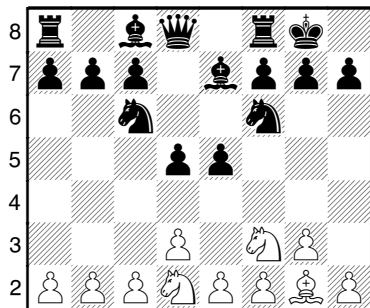
White's chances for success are good.
 Transpositions: **7.e4 c6** gives the same position as in Type 5.2 after 7.e4 ♜e8
 Continuations: **7.e4 c6 8.h3**

Type 5.6 – Black d/e Pawn Duo. A08 (D)



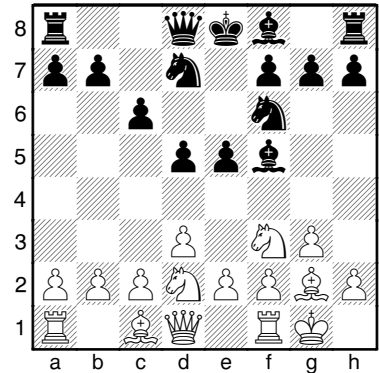
White's chances for success are equal.
 Continuation: **7.e4**

Type 5.7 – Black d/e Pawn Duo. A07 (D)



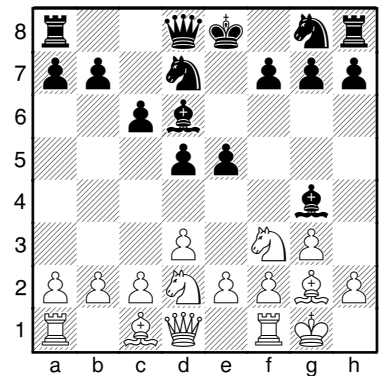
White's chances for success are equal.
 Continuation: **7.e4**

Type 5.8 – Black d/e Pawn Duo. A07 (D)



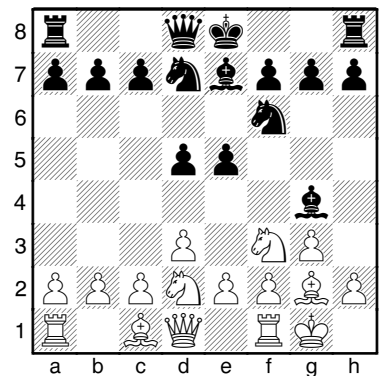
White's chances for success are equal.
 Continuation: **7.e4** or **7.♞e1**

Type 5.9 – Black d/e Pawn Duo. A07 (D)



White's chances for success are equal.
 Continuation: **7.e4** or **7.h3**

Type 5.10 – Black d/e Pawn Duo. A07 (D)



White's chances for success are good. Continuation: **7.e4** or **7.h3**

		3. ♖c3	♗g7	4.g3	♞c6	5. ♖g2	e5					
				4.e3	♞f6	5.d4	cx d4	6.ex d4	d5			

1.g3 c5

2. ♗f3	♞f6	3. ♖g2	c6									
--------	-----	--------	----	--	--	--	--	--	--	--	--	--

1.g4 d5 Grob

2. ♖g2	c6	3.h3	e5									
2.h3	e5	3. ♖g2	c6									