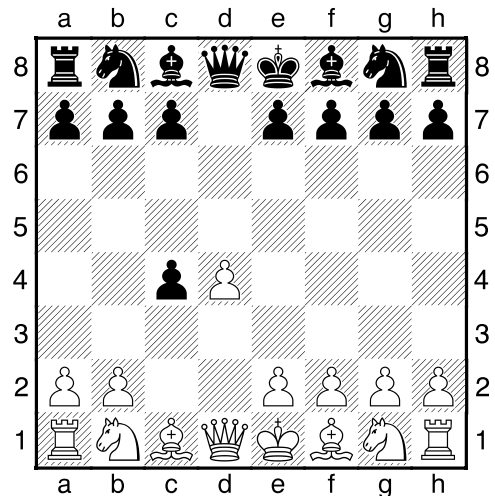


### Queen's Gambit Accepted

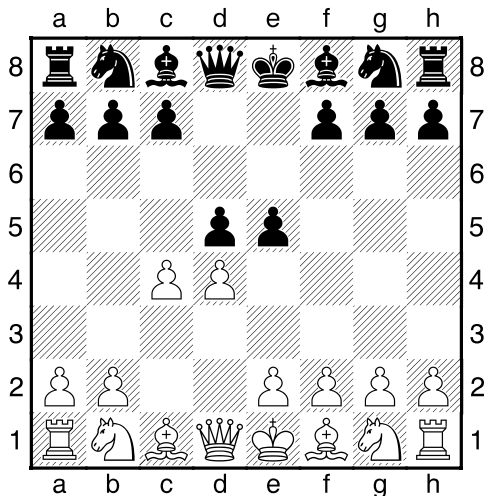
### Albin Counter Gambit

### Exchange Variation

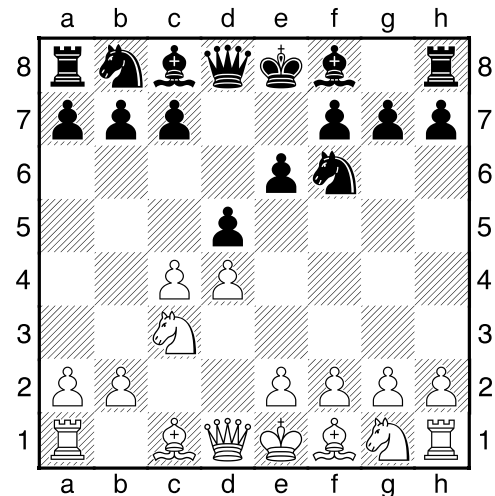
### Orthodox Defence



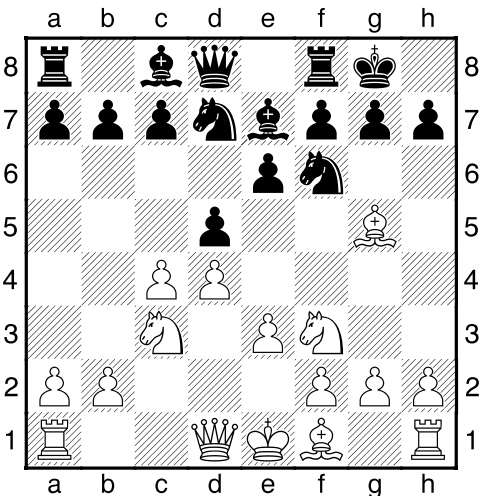
1.d4 d5 2.c4 dxc4



1.d4 d5 2.c4 e5



1.d4 d5 2.c4 e6 3.Nc3 Nf6 4.cxd5 e6xd5



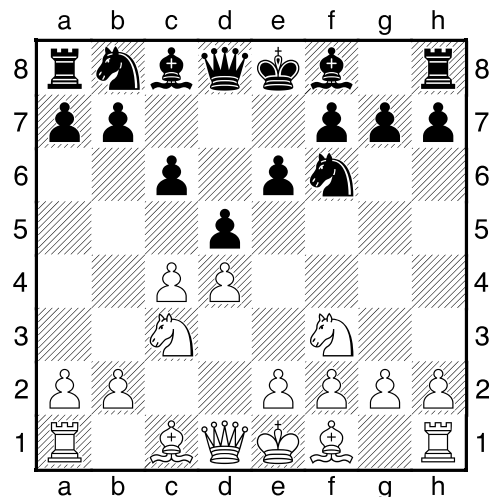
1.d4 d5 2.c4 e6 3.Nc3 Nf6 4.Bg5 Be7 5.e3 0-0 6.Nf3 Nd7

### Semi-Slav Defence

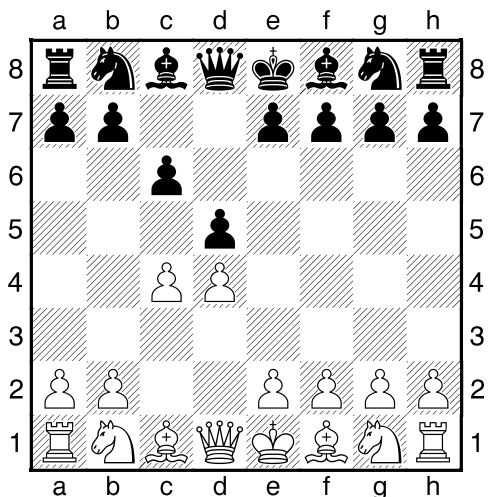
### Slav Defence

### Tarrasch Defence

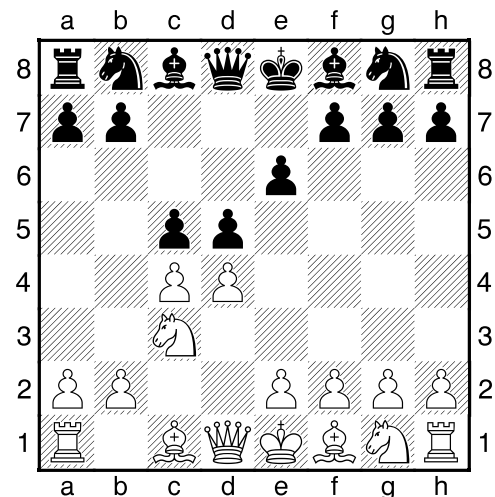
### Tchigorin Variation



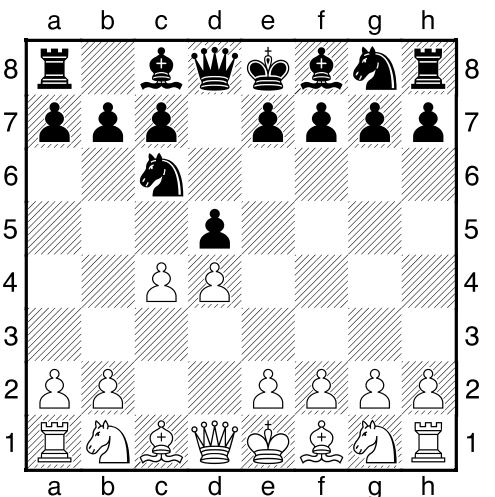
1.d4 d5 2.c4 c6 3.Nf3 Nf6 4.Nc3 e6



1.d4 d5 2.c4 c6

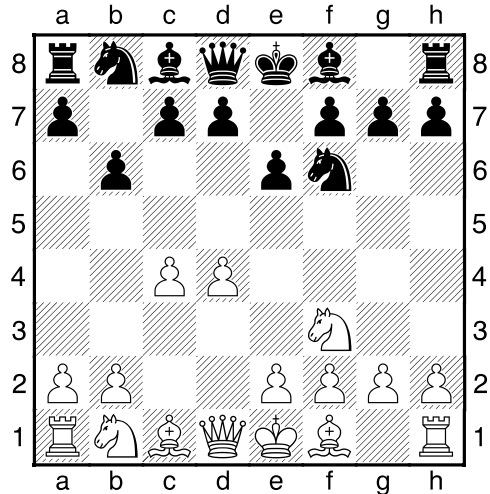


1.d4 d5 2.c4 e6 3.Nc3 c5



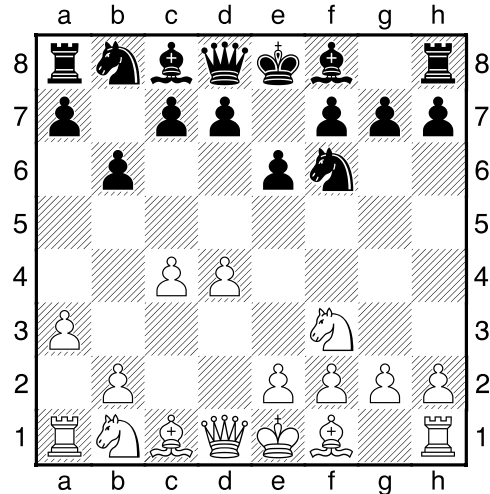
1.d4 d5 2.c4 Nc6

### Queen's Indian Defence



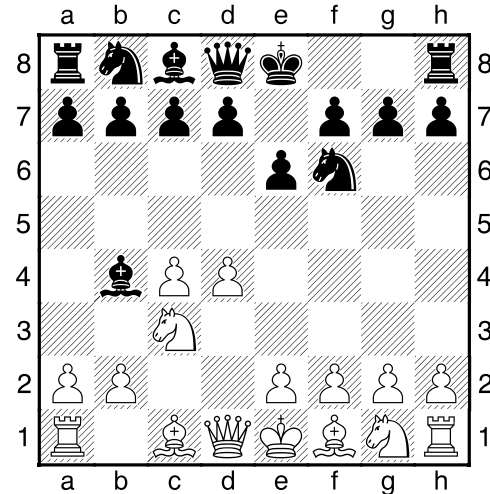
1.d4 Nf6 2.c4 e6 3.Nf3 b6

### Queen's Indian Defence - Petrosian's System



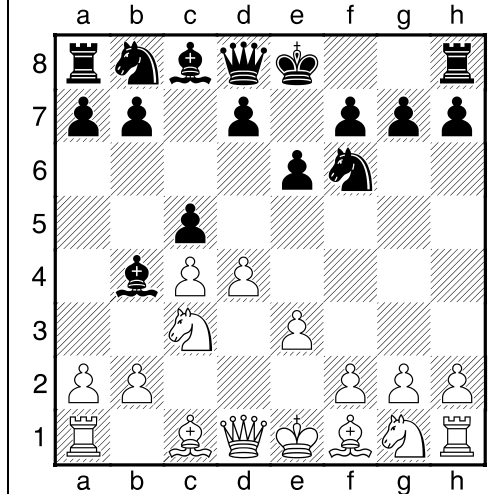
1.d4 Nf6 2.c4 e6 3.Nf3 b6 4.a3

### Nimzo Indian Defence



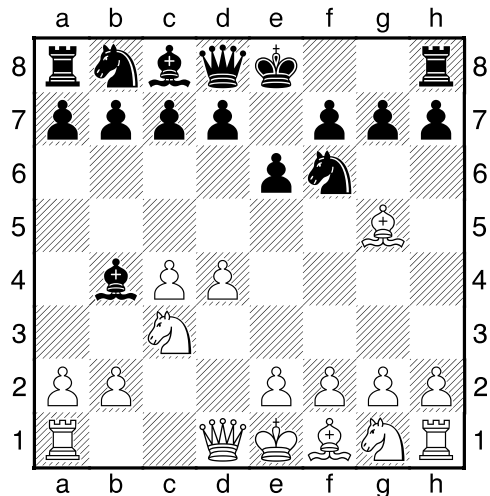
1.d4 Nf6 2.c4 e6 3.Nc3 Bb4

### Nimzo Indian Defence - Hübner's System



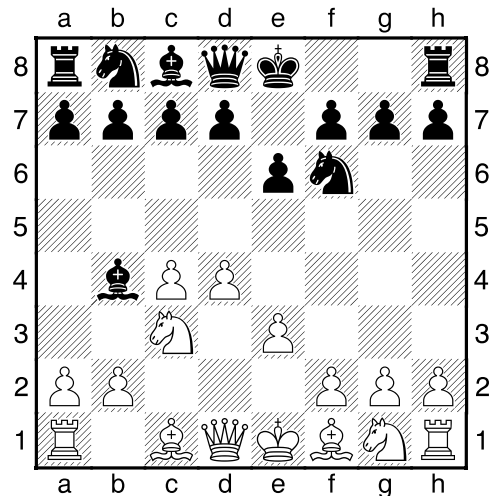
1.d4 Nf6 2.c4 e6 3.Nc3 Bb4 4.e3 c5

### Nimzo Indian Defence - Leningrad System



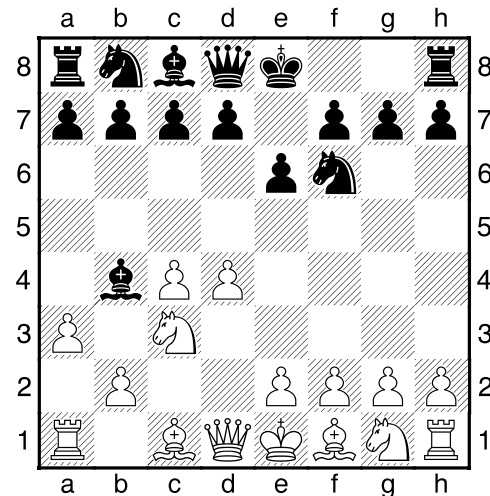
1.d4 Nf6 2.c4 e6 3.Nc3 Bb4 4.Bg5

### Nimzo Indian Defence - Rubinstein Variation



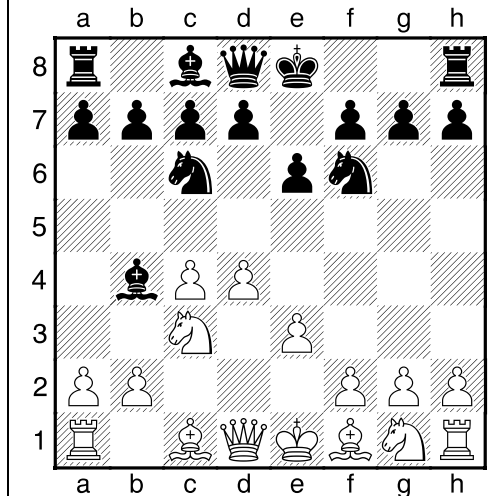
1.d4 Nf6 2.c4 e6 3.Nc3 Bb4 4.e3

### Nimzo Indian Defence - Sämisch Variation

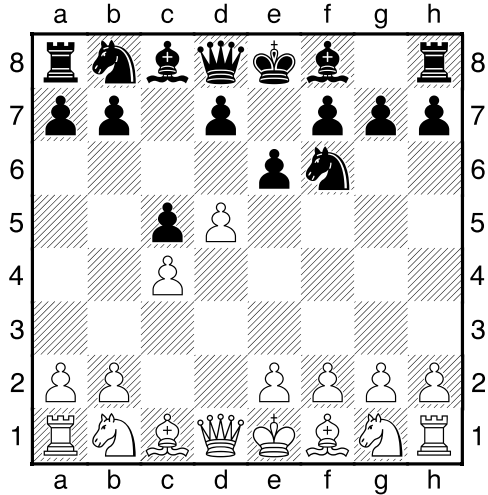


1.d4 Nf6 2.c4 e6 3.Nc3 Bb4 4.a3

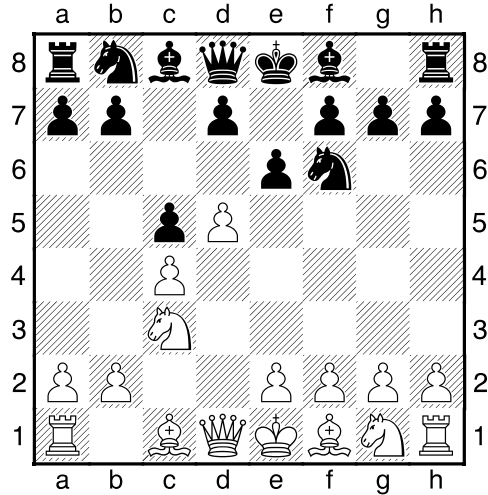
### Nimzo Indian Defence - Taimanov Variation



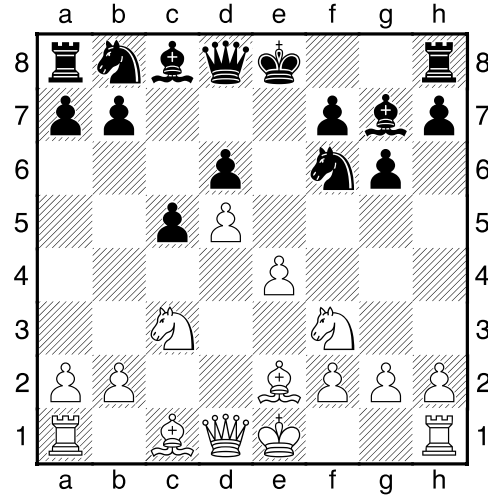
1.d4 Nf6 2.c4 e6 3.Nc3 Bb4 4.e3 Nc6

**Benoni Defence**

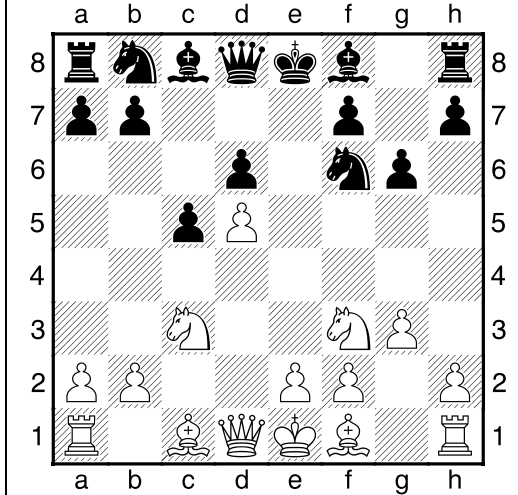
1.d4 Nf6 2.c4 c5 3.d5 e6

**Benoni Defence – Classical Variation**

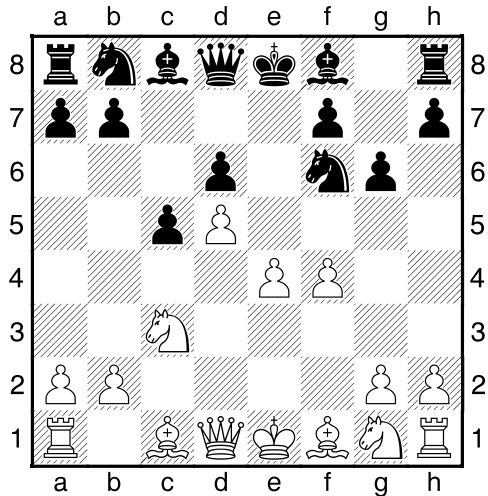
1.d4 Nf6 2.c4 c5 3.d5 e6 4.Nc3

**Benoni Defence – Classical Variation**

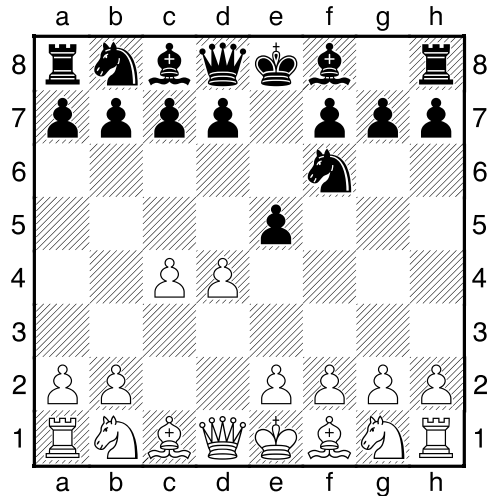
...exd5 5.cxd5 d6 6.e4 g6 7.Nf3 Bg7 8.Be2

**Benoni Defence – Fianchetto Variation**

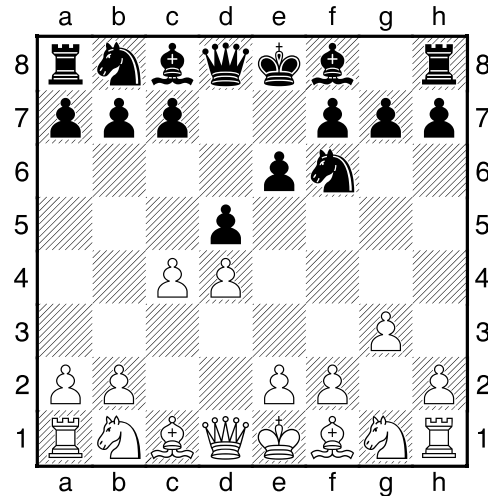
1.d4 Nf6 2.c4 c5 3.d5 e6 4.Nc3 exd5 5.cxd5 d6 6.Nf3 g6 7.g3

**Benoni Defence – Four Pawns Attack**

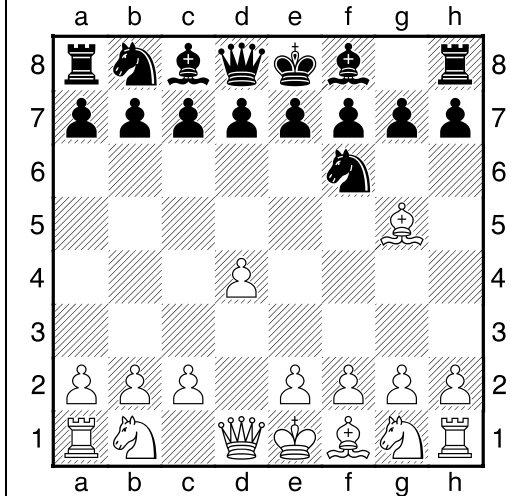
1.d4 Nf6 2.c4 c5 3.d5 e6 4.Nc3 exd5 5.cxd5 d6 6.e4 g6 7.f4

**Budapest Defence**

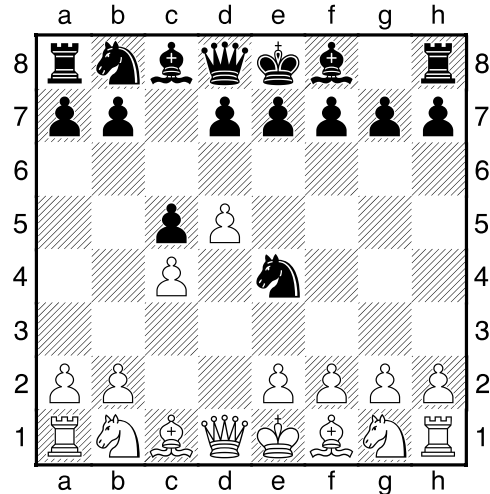
1.d4 Nf6 2.c4 e5

**Catalan System**

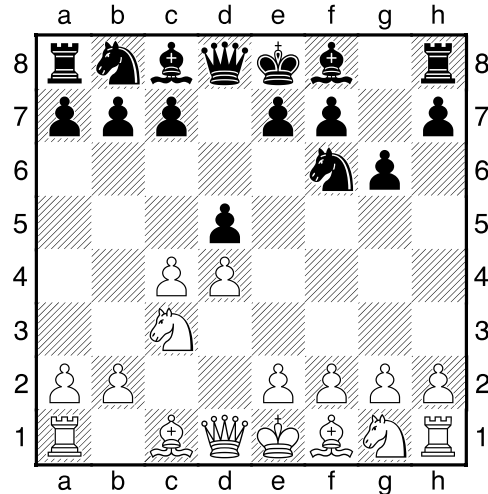
1.d4 Nf6 2.c4 e6 3.g3 d5

**Trompovski's Opening**

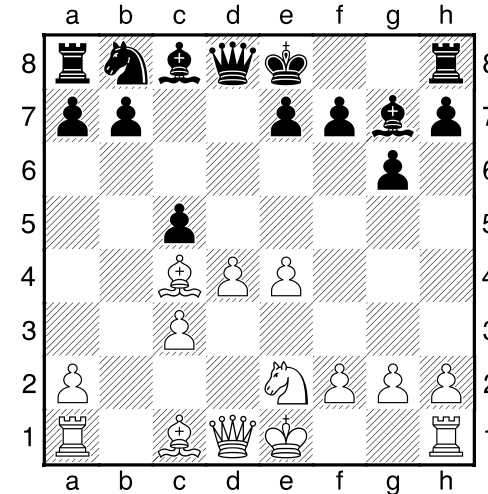
1.d4 Nf6 2.Bg5

**Vulture****Grünfeld Defence****Grünfeld Defence –  
Classical Exchange****Grünfeld Defence –  
Exchange Variation**

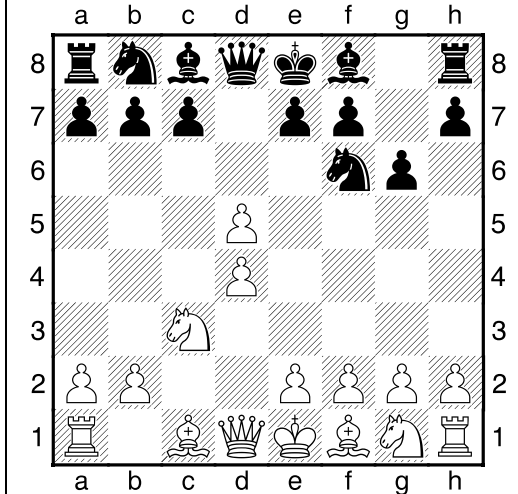
**1.d4 Nf6 2.c4 c5 3.d5 Ne4**



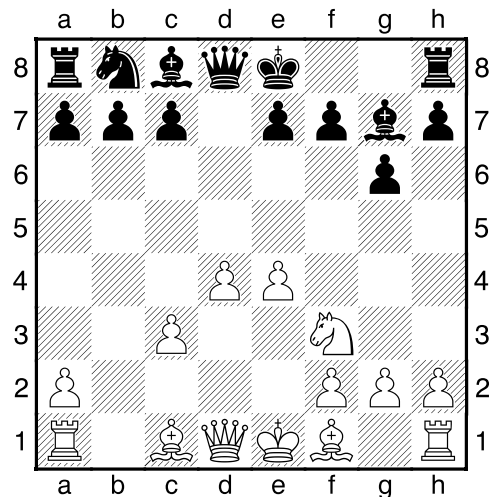
**1.d4 Nf6 2.c4 g6 3.Nc3 d5**



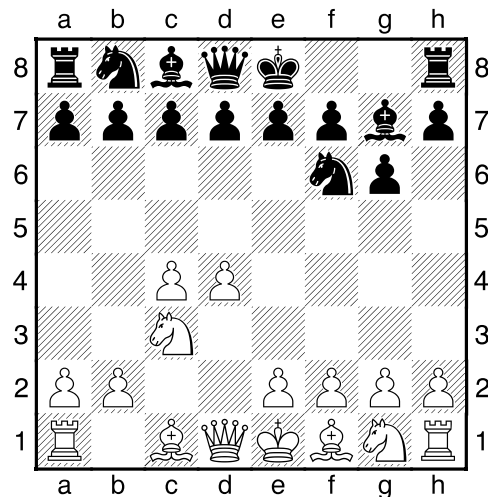
**1.d4 Nf6 2.c4 g6 3.Nc3 d5 4.cxd5  
Nxd5 5.e4 Nxc3 6.bxc3 Bg7  
7.Bc4 c5 8.Ne2**



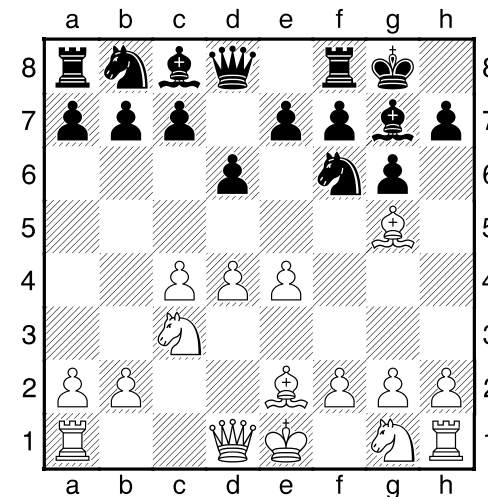
**1.d4 Nf6 2.c4 g6 3.Nc3 d5 4.cxd5**

**Grünfeld Defence –  
Modern Exchange Variation****King's Indian Defence****King's Indian Defence -  
Averbach Variation****King's Indian Defence -  
Classical System**

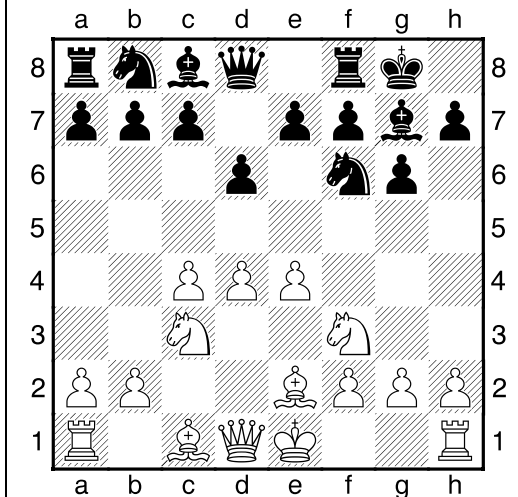
**1.d4 Nf6 2.c4 g6 3.Nc3 d5 4.cxd5  
Nxd5 5.e4 Nxc3 6.bxc3 Bg7 7.Nf3**



**1.d4 Nf6 2.c4 g6 3.Nc3 Bg7**

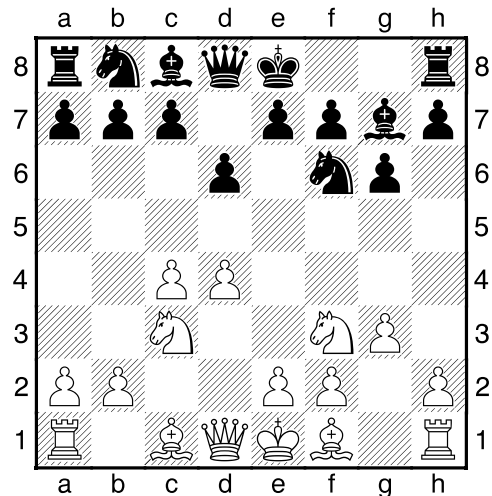


**1.d4 Nf6 2.c4 g6 3.Nc3 Bg7 4.e4  
d6 5.Be2 0-0 6.Bg5**



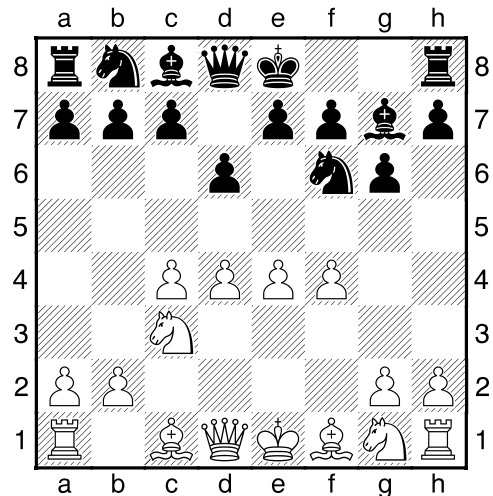
**1.d4 Nf6 2.c4 g6 3.Nc3 Bg7 4.e4  
d6 5.Nf3 0-0 6.Be2**

### King's Indian Defence – Fianchetto Variation



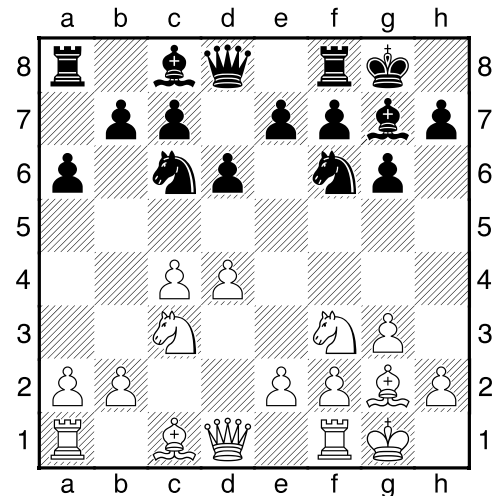
1.d4 Nf6 2.c4 g6 3.Nc3 Bg7 4.Nf3 d6 5.g3

### King's Indian Defence – Four Pawns Attack



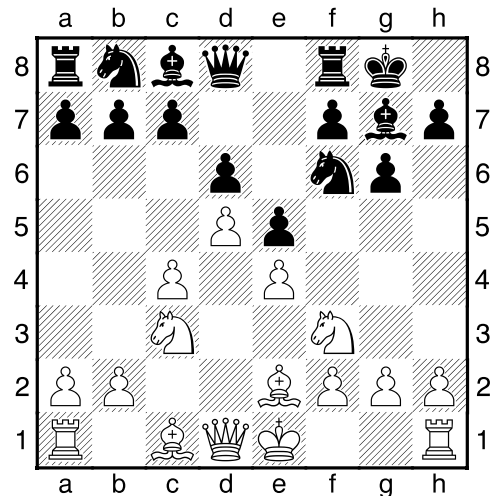
1.d4 Nf6 2.c4 g6 3.Nc3 Bg7 4.e4 d6 5.f4

### King's Indian Defence - Panno Variation



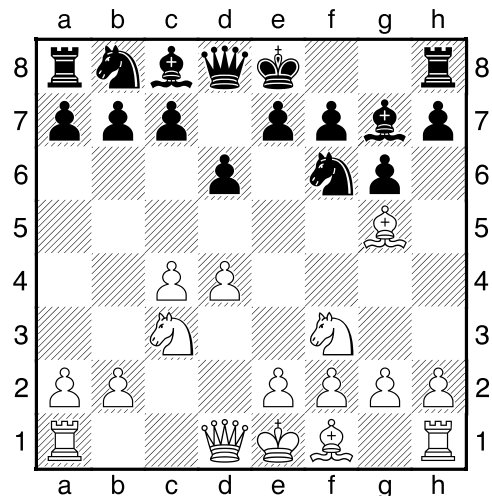
1.d4 Nf6 2.c4 g6 3.Nc3 Bg7 4.Nf3 d6 5.g3 0-0 6.Bg2 Nc6 7.0-0 a6

### King's Indian Defence - Petrosian's System



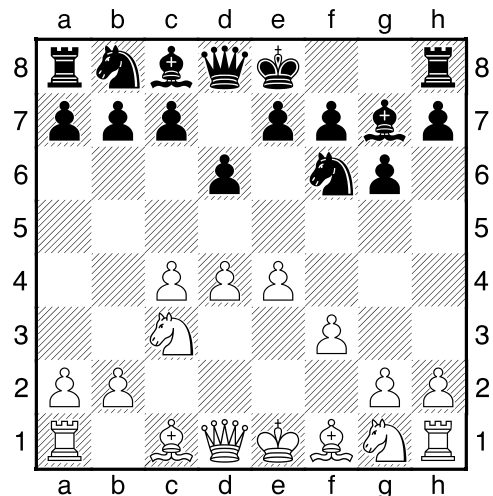
1.d4 Nf6 2.c4 g6 3.Nc3 Bg7 4.e4 d6 5.Nf3 0-0 6.Be2 e5 7.d5

### King's Indian Defence – Smyslov Variation



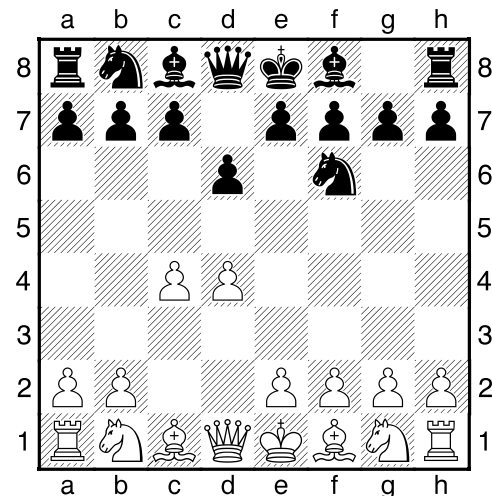
1.d4 Nf6 2.c4 g6 3.Nc3 Bg7 4.Nf3 d6 5.Bg5

### King's Indian Defence – Sämisch Variation



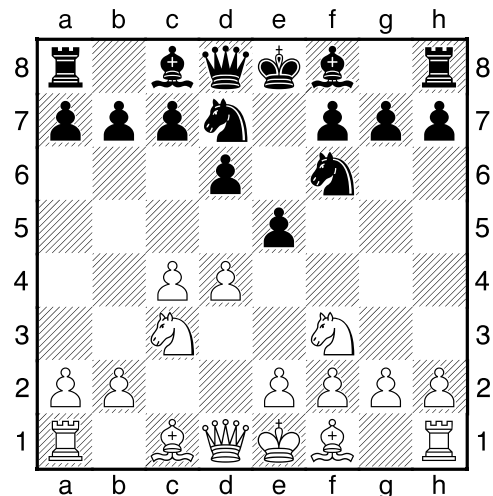
1.d4 Nf6 2.c4 g6 3.Nc3 Bg7 4.e4 d6 5.f3

### Old Indian Defence



1.d4 Nf6 2.c4 d6

### Old Indian Defence – Main Variation



1.d4 Nf6 2.c4 d6 3.Nc3 Nd7 4.Nf3 e5

**Blackmar-Diemer Gambit**

1.d4 d5 2.e4 dxe4 3.Nc3 Nf6 4.f3 e4xf3 5.Nxf3 c6 6.Bc4 Bf5

**Colle-Koltanowski System**

1.d4 d5 2.Nf3 Nf6 3.e3 e6 4.Bd3 c5 5.c3

**Torre Attack**

1.d4 Nf6 2.Nf3 e6 3.Bg5

**Torre Attack**

1.d4 Nf6 2.Nf3 g6 3.Bg5

**Orthodox Defence**

1.d4 d5 2.c4 e6 3.Nc3 Nf6 4.Bg5 Be7 5.e3 0-0 6.Nf3 Nd7

**Colle-Koltanowski System**

1.d4 d5 2.Nf3 Nf6

**Torre Attack**

1.d4 Nf6 2.Nf3

**Trompovski's Opening**

1.d4 Nf6 2.Bg5